

# 3M DI-NOC™ Architectural Finishes

## Color Samples

Dry Wood

Smooth Stone

Wood Grain Gloss

Effect

Stone

High Gloss

Suede

Textile

Textured Metal

Haku / Washi

Sand

Solid Color

Smooth Metal

Fine Wood

Oxidized Metal

Concrete

Abstract

Functional Products

Smooth Mortar

Metallic Wood

Hairline Metal

Ceramic / Tile

Leather

Industrial Texture

Wood Grain

Metal

Mortar / Stucco

Carbon

2020 - 2022

New Lineup

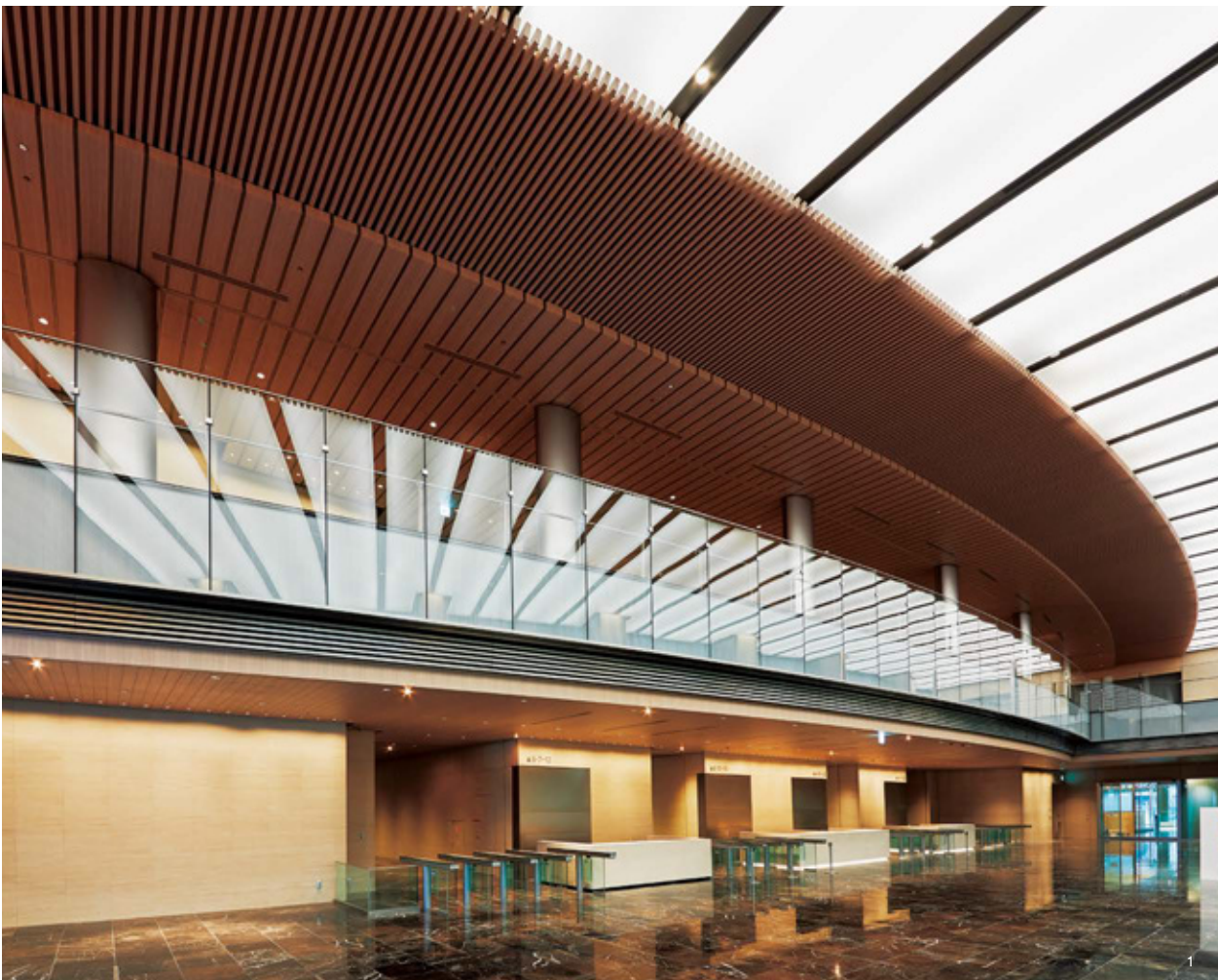
+ 38 designs / Matte Series

+31 79 330 10 00  
print.sign@blomsma.nl

  
**BLOMSMA**  
**PRINT&SIGN**

## Explore the Creativity

3M™ DI-NOC™ Architectural Finishes can be applied to a wide variety of surface materials, allowing infinite creativity. With the addition of *Suede* and *Dry Wood* new patterns that incorporate the latest trends, more than 1,000 different designs are now available. The new *Matte Series* utilizes the latest technology available, including *Solid Color*, with deep, rich colors, *Dry Wood*, with the appearance of natural wood, and *Industrial Texture*, with an industrial and an organic feel. The diverse selection of additional unique designs maximizes interior design possibilities and includes *Oxidized Metal*, which simulates an anodized coating, and *Textile*, with a delicate woven texture. Experience greater design freedom with DI-NOC architectural finishes.







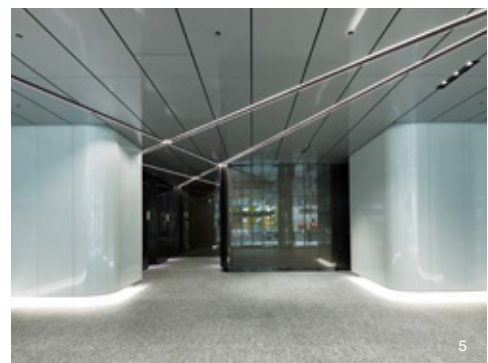
+31 79 330 10 00  
print.sign@blomsma.nl

**BLOMSMA**  
**PRINT&SIGN**

**Matte Series**

<b>Dry Wood</b>	<b>8</b>
<b>Suede</b>	<b>12</b>
<b>Smooth Metal</b>	<b>13</b>
<b>Solid Color</b>	
<b>Smooth Mortar</b>	<b>14</b>
<b>Industrial Texture</b>	
<b>Smooth Stone</b>	<b>15</b>
<b>Textile</b>	
<b>Fine Wood</b>	<b>17</b>
<b>Metallic Wood</b>	<b>26</b>
<b>Wood Grain</b>	<b>27</b>
<b>Wood Grain Gloss</b>	<b>29</b>
<b>Industrial Texture</b>	<b>32</b>
<b>Textured Metal</b>	
<b>Oxidized Metal</b>	<b>33</b>
<b>Hairline Metal</b>	<b>34</b>

<b>Metal</b>	<b>35</b>
<b>Effect</b>	
<b>Haku / Washi</b>	<b>36</b>
<b>Textile</b>	<b>38</b>
<b>Concrete</b>	<b>40</b>
<b>Ceramic / Tile</b>	
<b>Mortar / Stucco</b>	<b>41</b>
<b>Stone</b>	
<b>Sand</b>	<b>42</b>
<b>Abstract</b>	
<b>Leather</b>	<b>43</b>
<b>Abstract</b>	<b>44</b>
<b>Carbon</b>	<b>45</b>
<b>High Gloss</b>	
<b>Solid Color</b>	<b>46</b>
<b>Functional Products</b>	<b>48</b>



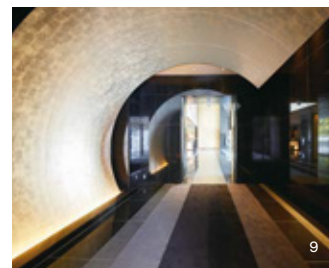






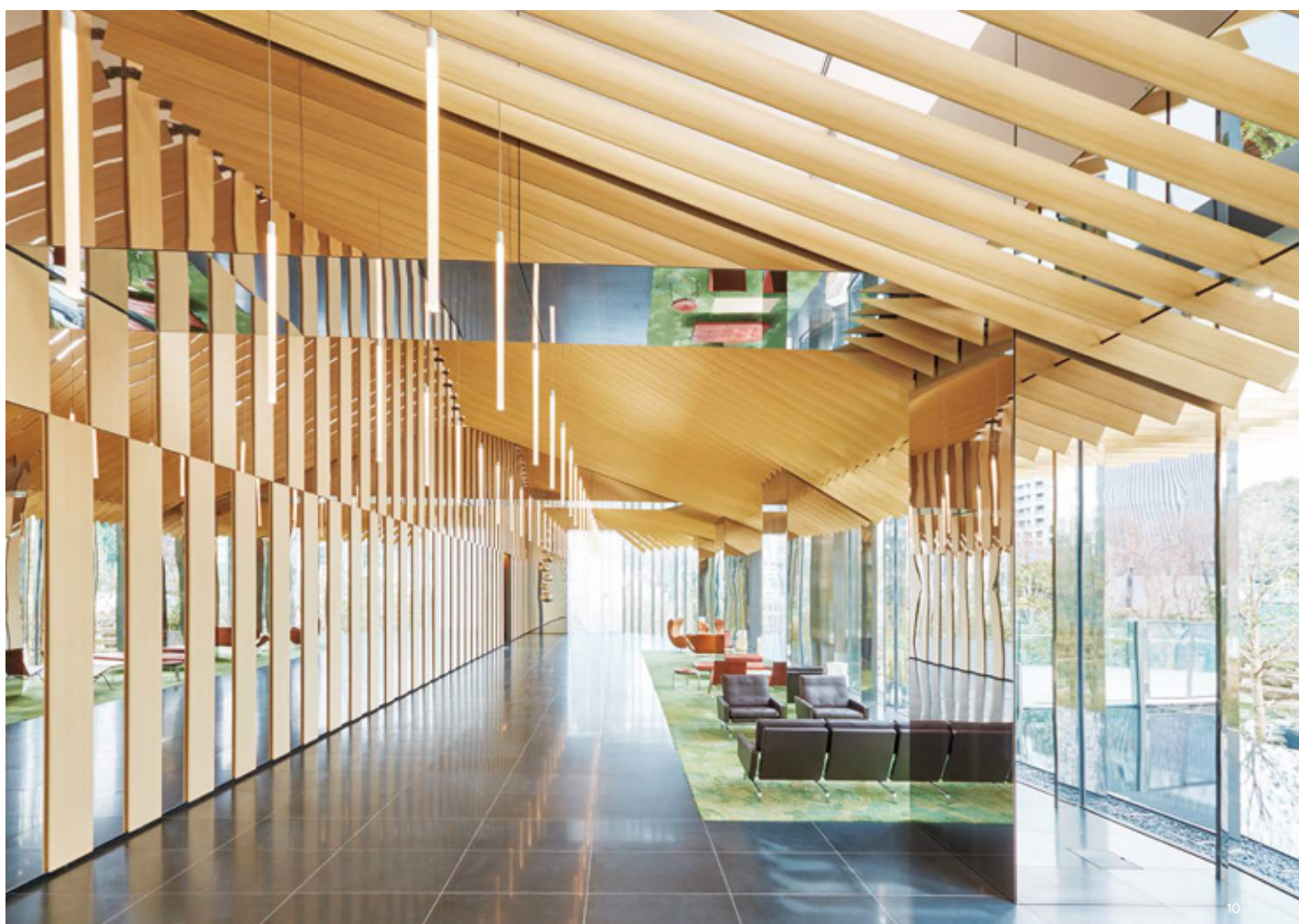
+31 79 330 10 00  
print.sign@blomsma.nl

**BLOMSMA**  
**PRINT&SIGN**



## Do more with your designs

- 1 FW-1212
- 2 ET-1774
- 3 DW-1888MT
- 4 ME-1884 / ME-1223
- 5 DG-1716 / DG-379 (Reference 3M Glass Finishes Sample Book for details)
- 6 FW-1022 / FW-1801 / FW-332 / FW-650 / AE-1632
- 7 ET-1775
- 8 PS-1864MT Photo: Dalki Morita Designer: JOINT CENTER
- 9 Custom design
- 10 Custom design of EX series





# Matte Series



GOOD  
DESIGN  
AWARD  
2019

- 1 ST-1920MT
- 2 AE-1959MT
- 3 DW-1883MT
- 4 AE-1930MT

1

2

3

4

+31 79 330 10 00  
print.sign@blomsma.nl

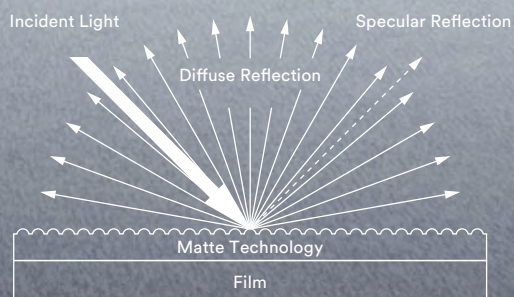


## Matte Coating Technology

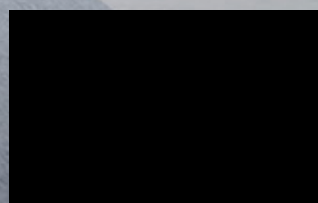
The new *Matte Series* utilizes the latest technology available. With a new state of the art matte surface, the *Matte Series* offers realistic texture by converting incident light into diffuse reflection and suppressing specular reflection. This series also provides fingerprint resistance. Explore the new world of design possibilities with 3M's *Matte Series*.



+31 79 330 10 00  
print.sign@blomsma.nl

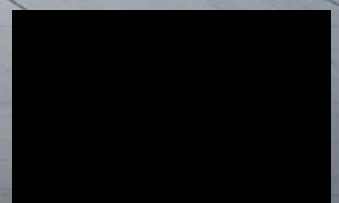


Experience the difference in texture between the existing series and new *Matte Series*.



Matte Series

PS-1870MT



Existing

PS-999



# Dry Wood

+31 79 330 10 00  
print.sign@blomsma.nl



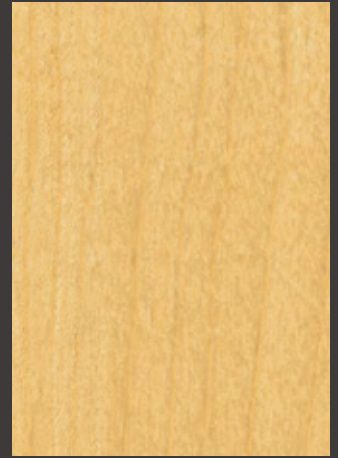
A



DW-2197MT ⓘ NEW



DW-2199MT ⓘ NEW



DW-2200MT ⓘ NEW

B

C



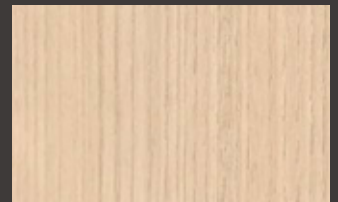
DW-1903MT ⓘ ⓘ



DW-1894MT ⓘ ⓘ



DW-1888MT ⓘ ⓘ



DW-1875MT ⓘ ⓘ

D



DW-2198MT ⓘ NEW



DW-2201MT ⓘ NEW



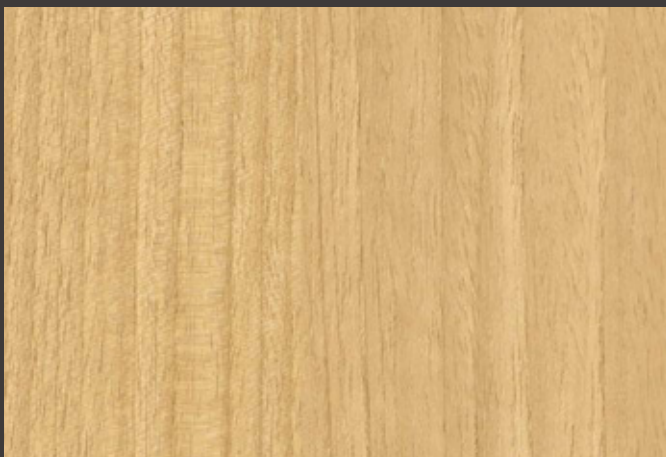
DW-2202MT ⓘ NEW



DW-1902MT ⓘ ⓘ

E

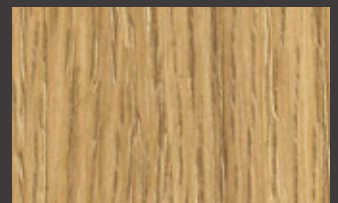
F



DW-2203MT ⓘ NEW



DW-2205MT ⓘ NEW

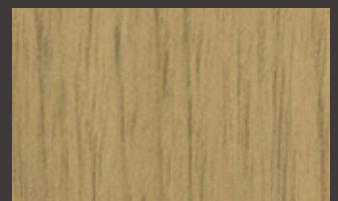


DW-2204MT ⓘ NEW

G



DW-2206MT ⓘ NEW



DW-1889MT ⓘ ⓘ





ⓘ Not recommended for use on compound curved surfaces

📷 Pattern is large scale; view full pattern width image at 3M.com/AMD

NEW New design

📄 Available in EX series or AR series; See pages 48 and 49

H A product number ending in "H" indicates horizontal grain direction

⚠️ Use caution during installation to prevent damage to product



DW-1883MT ⓘ 📷



DW-1901MT ⓘ 📷



DW-2207MT ⓘ NEW



DW-2209MT ⓘ NEW



DW-1878MT ⓘ 📷



DW-1873MT ⓘ 📷



DW-1876MT ⓘ 📷



DW-2208MT ⓘ NEW



DW-1897MT ⓘ 📷



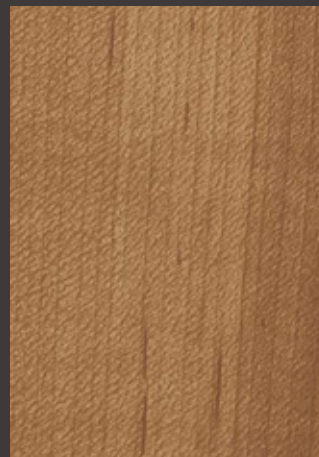
DW-2210MT ⓘ NEW



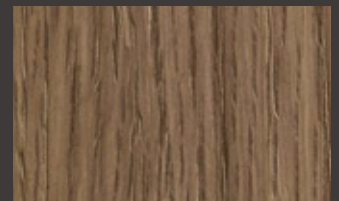
DW-1877MT ⓘ 📷



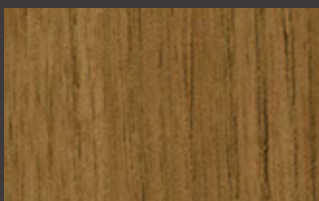
DW-2212MT ⓘ NEW



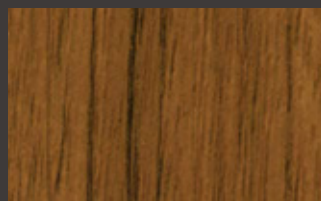
DW-1874MT ⓘ 📷



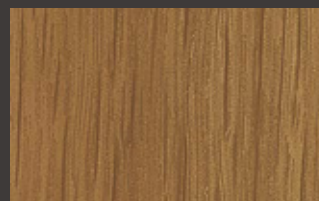
DW-2224MT ⓘ NEW



DW-1890MT ⓘ 📷



DW-1891MT ⓘ 📷



DW-1884MT ⓘ 📷



DW-2211MT ⓘ NEW

A

B

C

D

E

F

G



# Dry Wood

+31 79 330 10 00  
print.sign@blomsma.nl



A



DW-2218MT ⓘ NEW



DW-1872MT ⓘ 📷



DW-2219MT ⓘ NEW

B



DW-1893MT ⓘ 📷



DW-1892MT ⓘ 📷

C



DW-1898MT ⓘ 📷



DW-2223MT ⓘ NEW



DW-2226MT ⓘ NEW



DW-2225MT ⓘ NEW

D

E



DW-2221MT ⓘ NEW



DW-2220MT ⓘ NEW



DW-2222MT ⓘ NEW

F

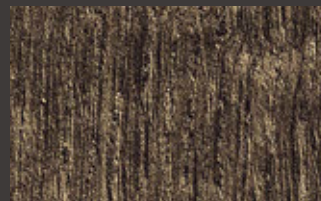
G



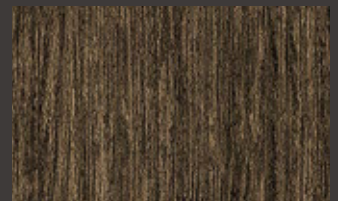
DW-1881MT ⓘ 📷



DW-1886MT ⓘ 📷



DW-1895MT ⓘ 📷



DW-1871MT ⓘ 📷





ⓘ Not recommended for use on compound curved surfaces

📷 Pattern is large scale; view full pattern width image at 3M.com/AMD

NEW New design

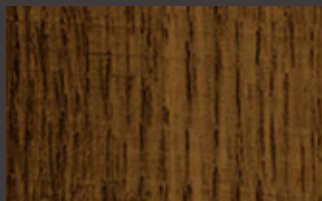
📄 Available in EX series or AR series; See pages 48 and 49

H A product number ending in "H" indicates horizontal grain direction

⚠ Use caution during installation to prevent damage to product



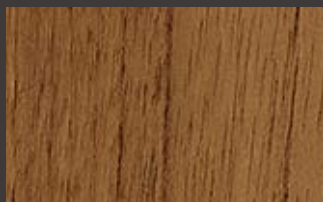
DW-1882MT ⓘ 📷



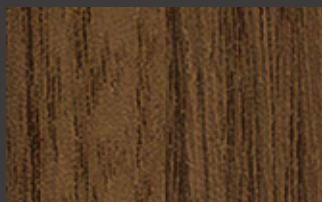
DW-1879MT ⓘ 📷



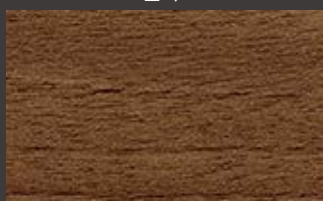
DW-2214MT ⓘ NEW



DW-1899MT ⓘ 📷



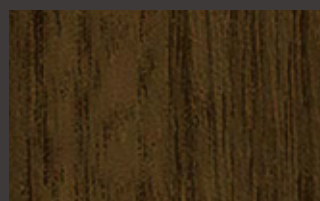
DW-2213MT ⓘ NEW



DW-1900HMT ⓘ 📷



DW-2217MT ⓘ NEW



DW-2217MT ⓘ NEW



DW-1885MT ⓘ 📷



DW-2216MT ⓘ NEW



DW-2215MT ⓘ NEW



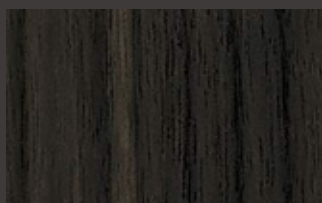
DW-2227MT ⓘ NEW



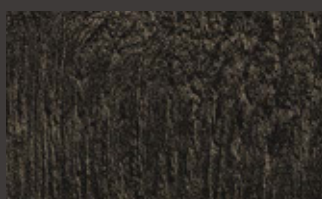
DW-1887MT ⓘ 📷



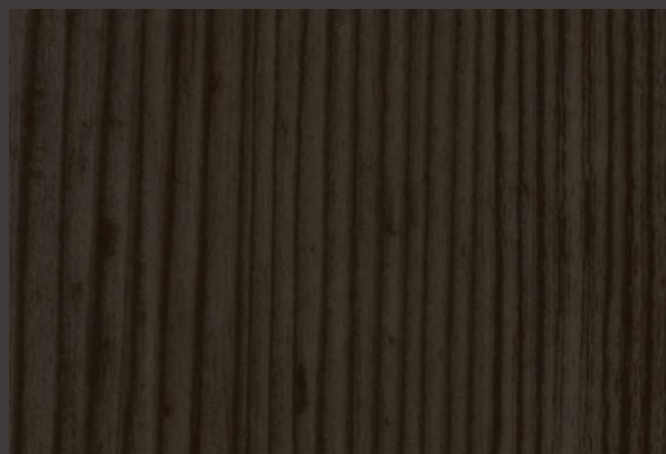
DW-2228MT ⓘ NEW



DW-1992MT ⓘ 📷



DW-1896MT ⓘ 📷



DW-2229MT ⓘ NEW

A  
B  
C  
D  
E  
F  
G



# Suede

+31 79 330 10 00  
print.sign@blomsma.nl



A



SU-2232MT NEW

B



SU-2233MT NEW

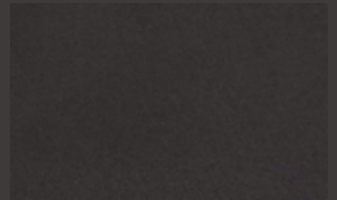


SU-2231MT NEW

C



SU-2234MT NEW



SU-2235MT NEW

D



1

2

3

1 SU-2231MT NEW 2 DW-2229MT NEW 3 PS-006AR

ⓘ Not recommended for use on compound curved surfaces

NEW New design

H A product number ending in "H" indicates horizontal grain direction

🖨️ Pattern is large scale; view full pattern width image at 3M.com/AMD

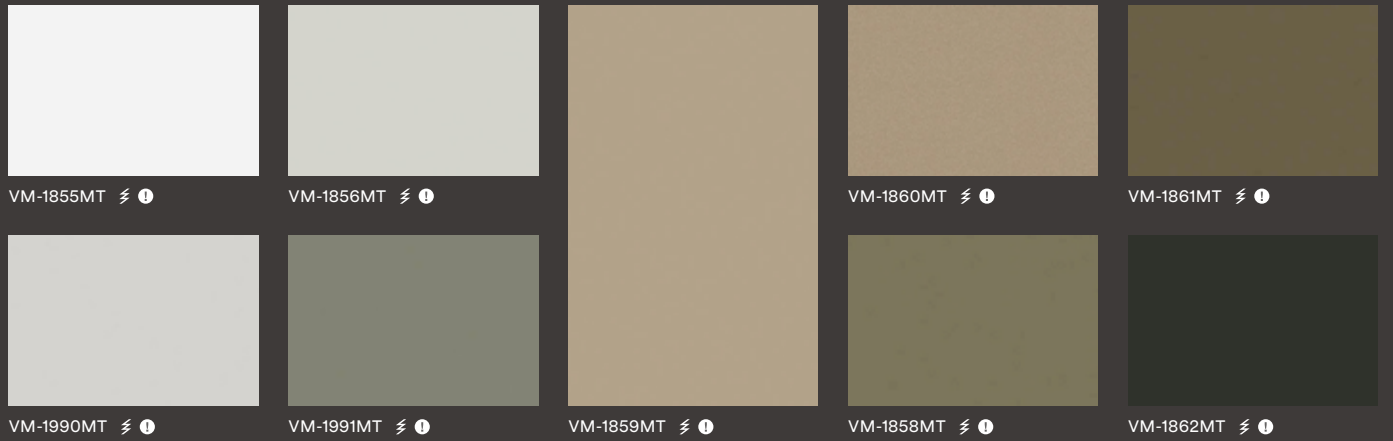
📄 Available in EX series or AR series; See pages 48 and 49

⚠️ Use caution during installation to prevent damage to product

+31 79 330 10 00  
print.sign@blomsma.nl



# Smooth Metal



A

B

C

# Solid Color



D

E

F

G

H

# Smooth Mortar

+31 79 330 10 00  
print.sign@blomsma.nl



A



AE-1917MT ⓘ



AE-1913MT ⓘ



AE-1921MT ⓘ

B

C

# Industrial Texture

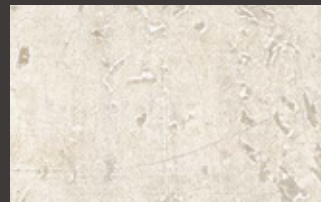
D



AE-1959MT ⓘ



AE-1880MT ⓘ 📷



AE-1931MT ⓘ 📷



AE-1960MT ⓘ

E

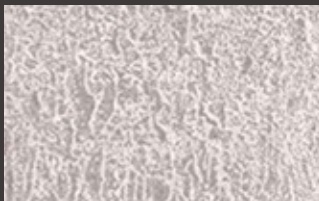


AE-1930MT ⓘ 📷



AE-1932MT ⓘ 📷

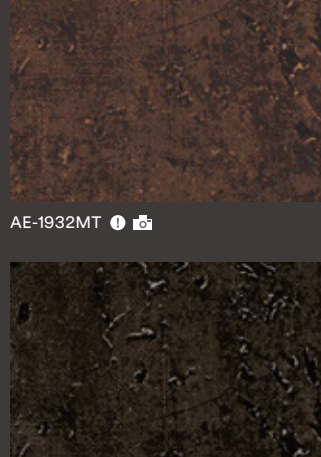
F



AE-1928MT ⓘ



AE-1926MT ⓘ 📷

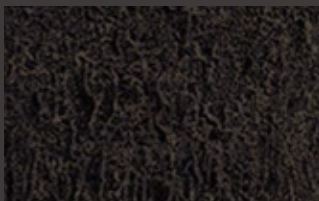


AE-1933MT ⓘ 📷



AE-1944MT ⓘ

G



AE-1929M ⓘ



ⓘ Not recommended for use on compound curved surfaces

📷 Pattern is large scale; view full pattern width image at 3M.com/AMD

NEW New design

📄 Available in EX series or AR series; See pages 48 and 49

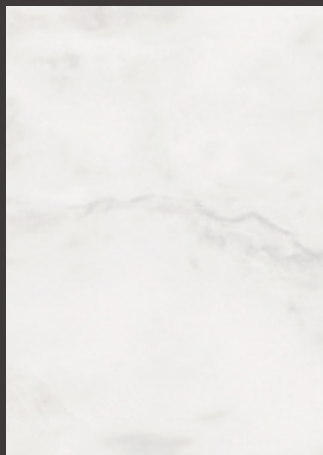
H A product number ending in "H" indicates horizontal grain direction

⚠️ Use caution during installation to prevent damage to product

+31 79 330 10 00  
print.sign@blomsma.nl



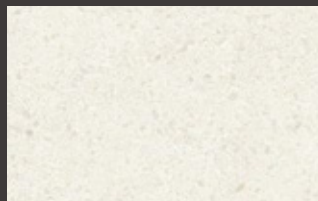
# Smooth Stone



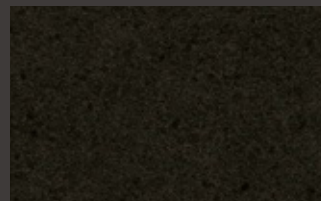
ST-1914MT ⓘ 📷



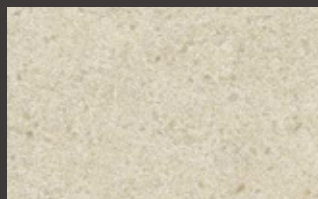
ST-1919MT ⓘ 📷



ST-1911MT ⓘ



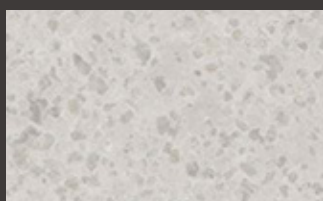
ST-1916MT ⓘ



ST-1915MT ⓘ



ST-1920MT ⓘ 📷



ST-1918MT ⓘ



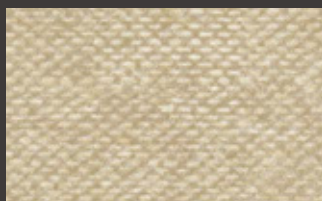
ST-1912MT ⓘ



ST-1927MT ⓘ 📷



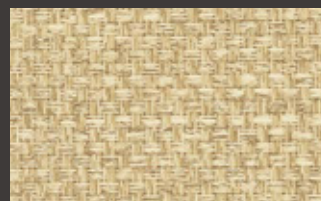
NU-1934MT ⓘ



NU-1938MT ⓘ



NU-1942MT ⓘ



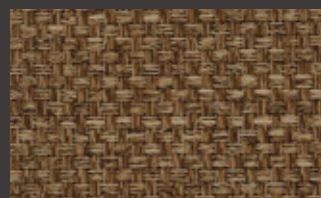
NU-1943MT ⓘ



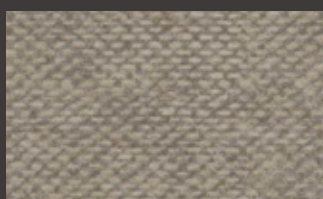
NU-1940MT ⓘ



NU-1941MT ⓘ



NU-1936MT ⓘ



NU-1935MT ⓘ



NU-1939MT ⓘ



NU-1937MT ⓘ

## Textile

A

B

C

D

E

F

G



+31 79 330 10 00  
print.sign@blomsma.nl

**BLOMSMA**  
**PRINT&SIGN**

Like nothing  
you've used before

1

2





ⓘ Not recommended for use on compound curved surfaces

NEW New design

H A product number ending in "H" indicates horizontal grain direction

🖨️ Pattern is large scale; view full pattern width image at 3M.com/AMD

F Available in EX series or AR series; See pages 48 and 49

⚠️ Use caution during installation to prevent damage to product

+31 79 330 10 00  
print.sign@blomsma.nl



**Fine Wood**



FW-1761



FW-1758



FW-1683



FW-1765 🖨️



FW-1138 F



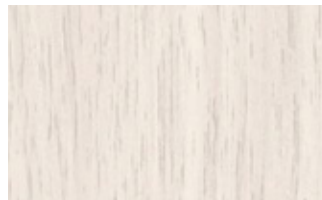
FW-1139H



FW-788



FW-7017 F



FW-1209 🖨️



FW-1208



FW-7001 🖨️



FW-1274



FW-1255 🖨️



FW-1271 🖨️



FW-1811



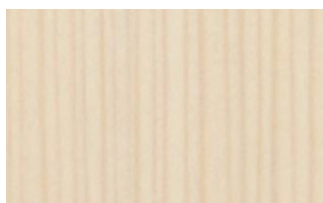
FW-1268 🖨️



FW-1207



FW-1980 🖨️



FW-1747



FW-1210 🖨️



FW-336 🖨️



FW-1217 🖨️

FW-1261 🖨️

A

B

C

D

E

F

G



# Fine Wood

+31 79 330 10 00  
print.sign@blomsma.nl



A



FW-1981



FW-1745



FW-1682



FW-789

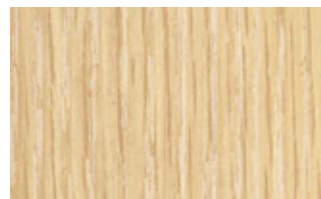
B



FW-1214



FW-1211



FW-1291

C



FW-1258



FW-1129



FW-1130H



FW-1766

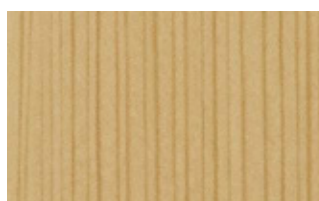
D



FW-1256



FW-1285



FW-1748



FW-1285

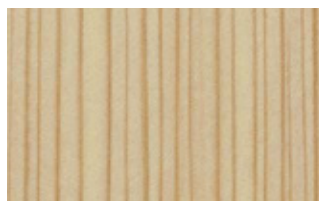
E



FW-1289



FW-1988



FW-1750



FW-1972

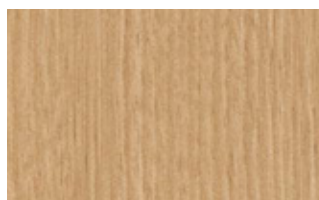
F



FW-1681



FW-1293



FW-1279



FW-1972

G



FW-1262



FW-1269



FW-1810



FW-1272

ⓘ Not recommended for use on compound curved surfaces

NEW New design

H A product number ending in "H" indicates horizontal grain direction

🖼️ Pattern is large scale; view full pattern width image at 3M.com/AMD

F Available in EX series or AR series; See pages 48 and 49

⚠️ Use caution during installation to prevent damage to product

+31 79 330 10 00  
print.sign@blomsma.nl



FW-1974 🖼️



FW-1978 🖼️



FW-1754



FW-1307 🖼️



FW-1987 🖼️



FW-1978 🖼️



FW-1976 🖼️



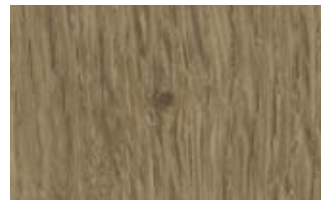
FW-1767 🖼️



FW-1304 🖼️



FW-1302 🖼️



FW-1300 🖼️



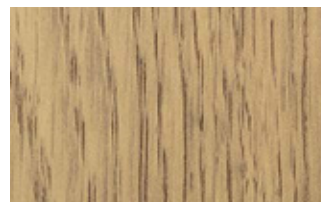
FW-1756



FW-1977 🖼️



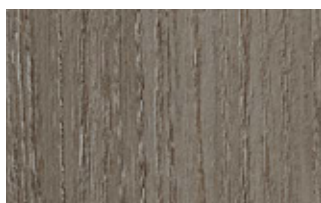
FW-1213 🖼️



FW-1287



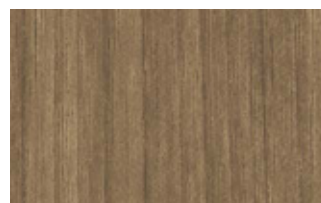
FW-337 🖼️ F



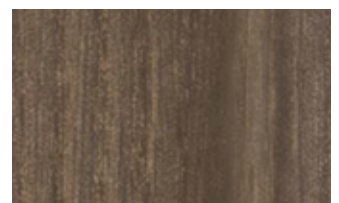
FW-1259



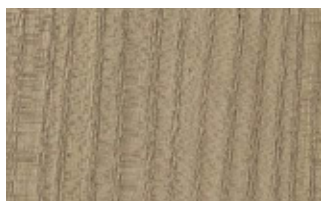
FW-1292 🖼️



FW-1982 🖼️



FW-1770 🖼️



FW-1215 🖼️



FW-1971 🖼️



FW-1983 🖼️



FW-1218 🖼️

A

B

C

D

E

F

G



# Fine Wood

+31 79 330 10 00  
print.sign@blomsma.nl



A



FW-1265



FW-1212



FW-616



FW-236

B



FW-1122



FW-1023



FW-1286



FW-1771H

C



FW-1122



FW-1296



FW-1257

D



FW-791



FW-1755



FW-1734H

E



FW-1306



FW-1805

F



FW-1735H



FW-7011



FW-7011AR

## 3M™ DI-NOC™ AR Series

AR Series abrasion-resistant patterns are designed for high traffic applications and maintain a beautiful appearance.

Please see page 48 for additional AR Series patterns.



ⓘ Not recommended for use on compound curved surfaces

NEW New design

H A product number ending in "H" indicates horizontal grain direction

📷 Pattern is large scale; view full pattern width image at 3M.com/AMD

F Available in EX series or AR series; See pages 48 and 49

⚠ Use caution during installation to prevent damage to product

+31 79 330 10 00  
print.sign@blomsma.nl



FW-327



FW-1283



FW-1280 📷 F



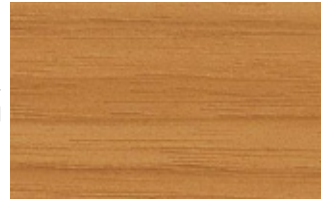
FW-1743



FW-234 📷



FW-1123 F



FW-608H



FW-1737



FW-231



FW-795



FW-1331 📷



FW-501



FW-237



FW-612



FW-502



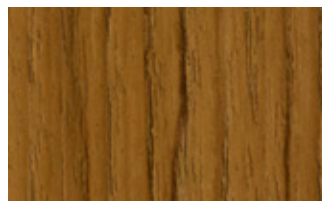
FW-1276 📷



FW-1738



FW-888



FW-1125 📷



FW-655 📷



FW-1278 📷



FW-1281 📷



FW-233 F



FW-889

A

B

C

D

E

F

G

# Fine Wood

+31 79 330 10 00  
print.sign@blomsma.nl



A



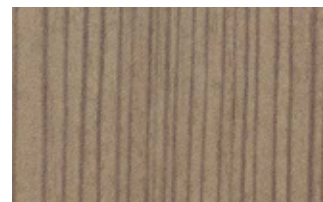
FW-1121H

B



FW-1273

C



FW-1749

D



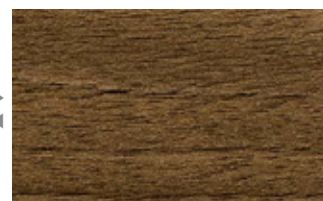
FW-1763



FW-1297

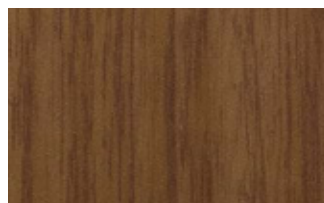


FW-1022

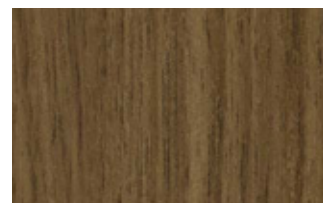


FW-1121H

E



FW-613



FW-1021

F



FW-1760



FW-7008

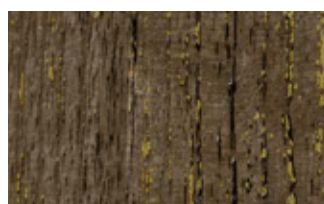


FW-1764

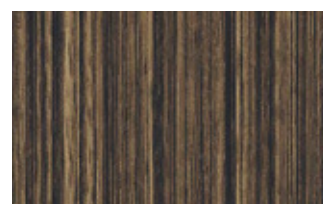


FW-656

G



FW-1769



FW-521



ⓘ Not recommended for use on compound curved surfaces

NEW New design

H A product number ending in "H" indicates horizontal grain direction

📷 Pattern is large scale; view full pattern width image at 3M.com/AMD

F Available in EX series or AR series; See pages 48 and 49

⚠ Use caution during installation to prevent damage to product

+31 79 330 10 00  
print.sign@blomsma.nl



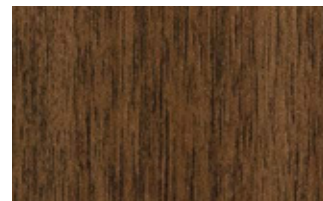
FW-1768



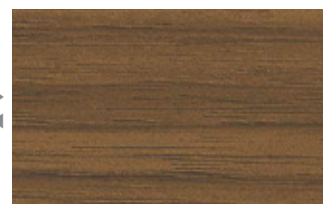
FW-1744



FW-1113 F



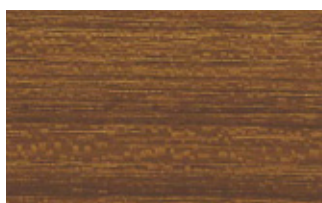
FW-650 F



FW-609H F



FW-1124 F



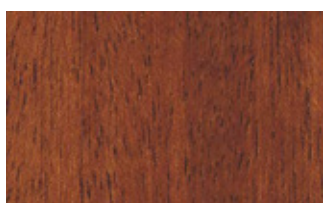
FW-1039H



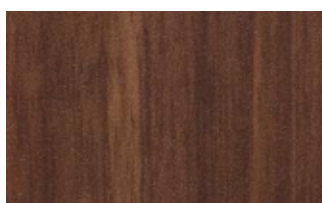
FW-677



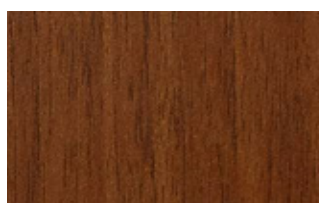
FW-332 📷



FW-886



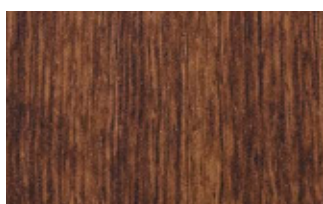
FW-614



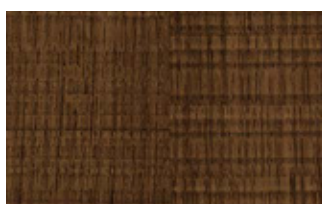
FW-510



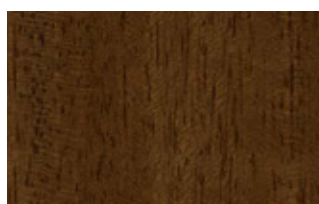
FW-1801 F



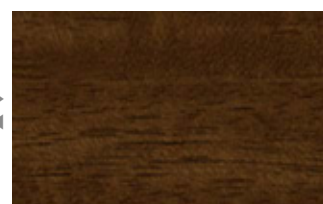
FW-240



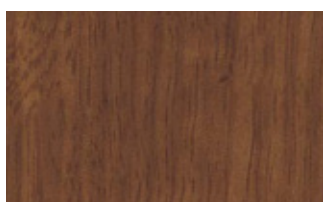
FW-1270 📷



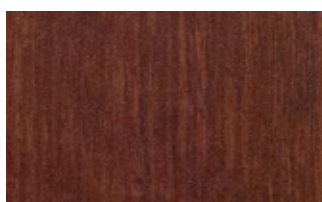
FW-1137



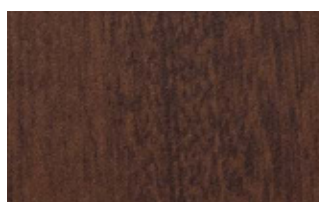
FW-1040H



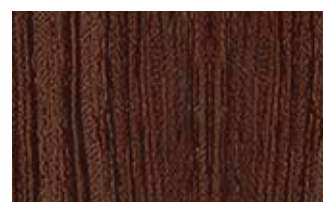
FW-232



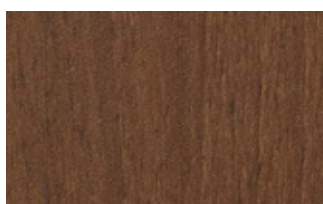
FW-619



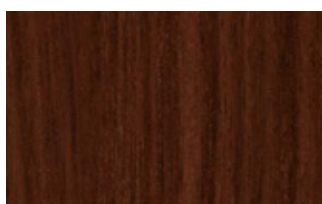
FW-7016



FW-649



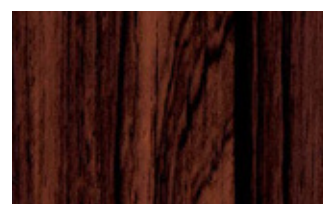
FW-7006 F



FW-1020 📷



FW-887 F



FW-7013 📷

A

B

C

D

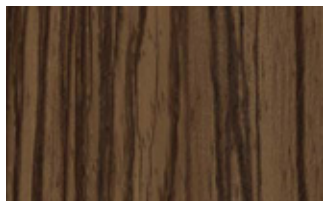
E


F

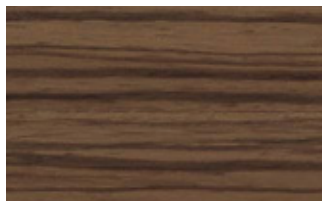
G

# Fine Wood

A




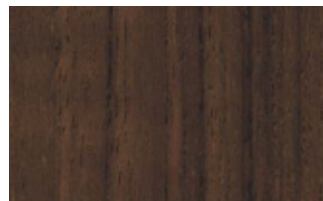
FW-1134 




FW-606H



FW-625 

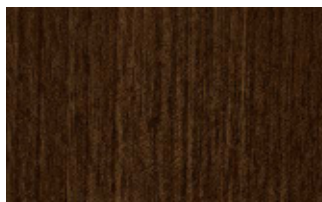


FW-7015 

B



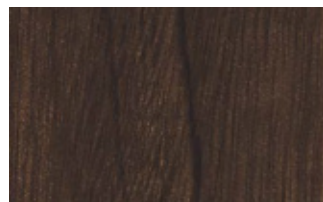
FW-651 




FW-1282

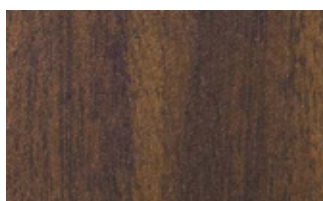



FW-648

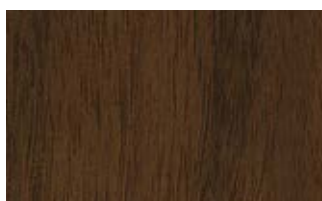



FW-1037 

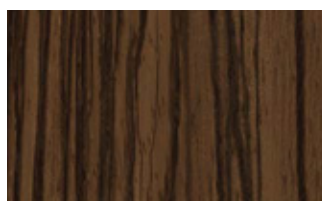
C




FW-338 



FW-7009 

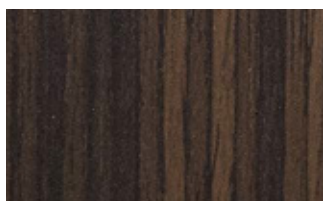


FW-1133 




FW-607H

D




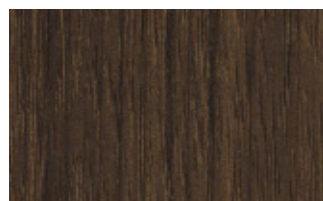
FW-653




FW-643 

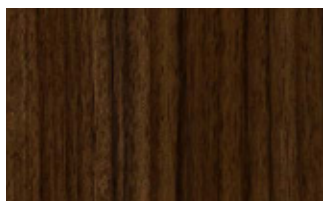



FW-7014 

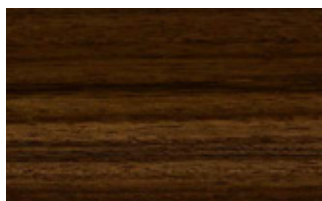


FW-330 

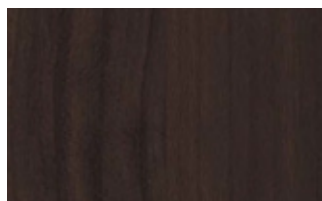
E



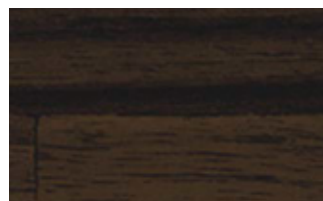
FW-1135 



FW-1136H

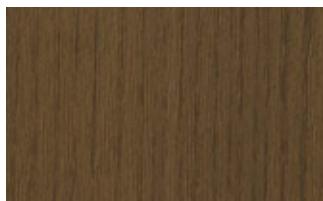


FW-1036

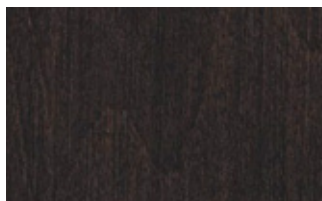


FW-1752H 

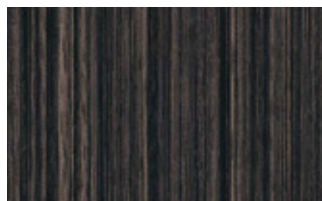
F




FW-1746




FW-334

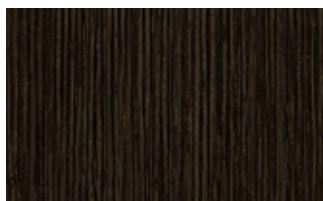


FW-522 

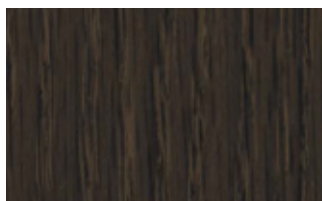



FW-1752H 

G



FW-1126




FW-627 



FW-1288



FW-618 



ⓘ Not recommended for use on compound curved surfaces

NEW New design

H A product number ending in "H" indicates horizontal grain direction

📷 Pattern is large scale; view full pattern width image at 3M.com/AMD

F Available in EX series or AR series; See pages 48 and 49

⚠ Use caution during installation to prevent damage to product

+31 79 330 10 00  
print.sign@blomsma.nl



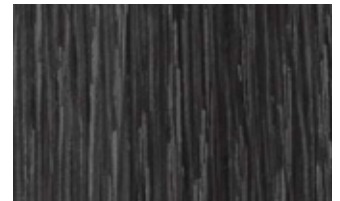
FW-1736H 📷



FW-1216 📷



FW-7007 📷



FW-1290



FW-1986 📷



FW-1275 📷



FW-1301 📷



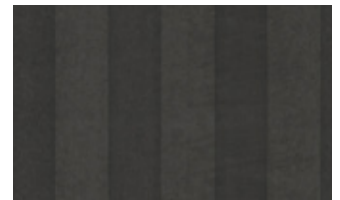
FW-640 F



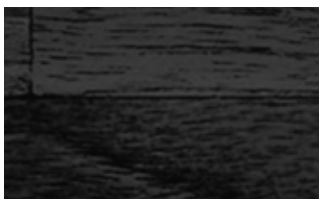
FW-1975 📷



FW-324 📷 F



FW-1759



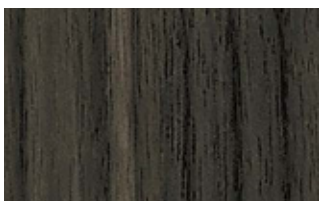
FW-1753H 📷



FW-1127 📷



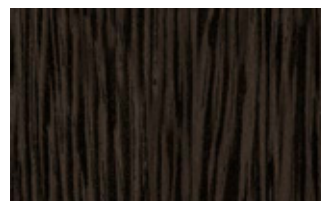
FW-1762



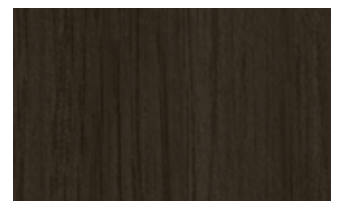
FW-1751 📷



FW-641



FW-1984 📷



FW-1985 📷



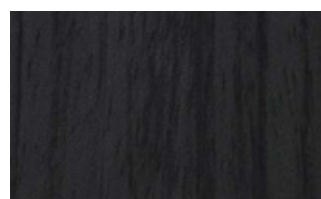
FW-1970 📷



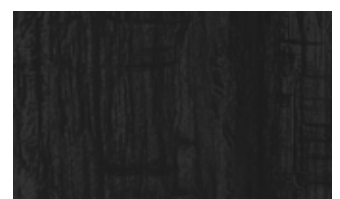
FW-1985 📷



FW-1979 📷



FW-1740



FW-1757

A

B

C

D

E

F

G

# Metallic Wood

A



MW-1416



MW-1242



MW-1243



MW-1244

B



MW-1833



MW-1832



MW-1418

C



MW-1834

D



MW-1782



MW-1783



MW-1419



MW-1417

E

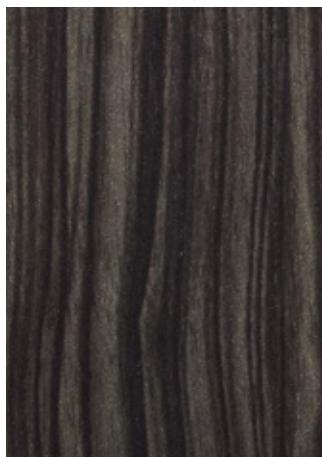


MW-1177

F



MW-1420

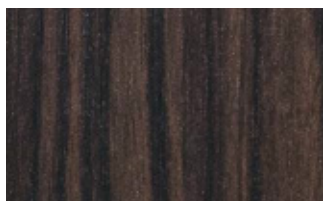


MW-777



MW-1834

G



MW-776



ⓘ Not recommended for use on compound curved surfaces

NEW New design

H A product number ending in "H" indicates horizontal grain direction

🖼️ Pattern is large scale; view full pattern width image at 3M.com/AMD

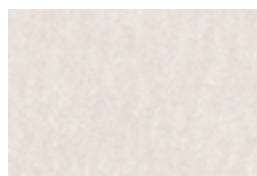
F Available in EX series or AR series; See pages 48 and 49

⚠️ Use caution during installation to prevent damage to product

+31 79 330 10 00  
print.sign@blomsma.nl



# Wood Grain



WG-657 🖼️ F



WG-1365



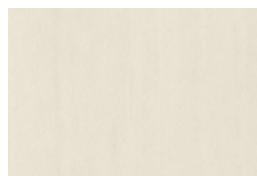
WG-2078 🖼️



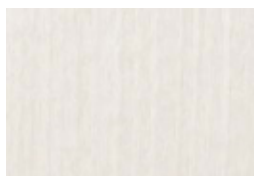
WG-1067



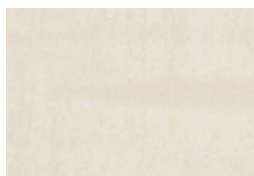
WG-1071 🖼️



WG-1709



WG-1846



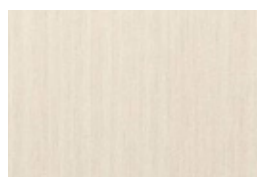
WG-247 🖼️



WG-1046 🖼️



WG-1339



WG-1343



WG-2049



WG-1705



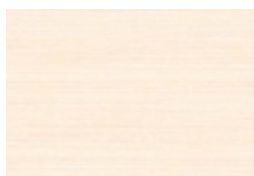
WG-2076 🖼️



WG-467



WG-1344



WG-2083H



WG-376



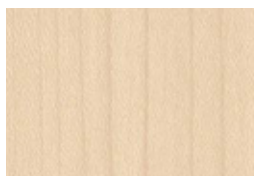
WG-1220



WG-2070 🖼️



WG-1340



WG-1378



WG-960 🖼️ F



WG-662



WG-2073 🖼️



WG-1838



WG-1141 🖼️



WG-1357



WG-1355



WG-964



WG-1143 F



WG-2085



WG-166



WG-1144 🖼️ F



WG-2860



WG-1840



WG-1837



WG-2705 🖼️



WG-1392H



WG-1710 🖼️

A

B

C

D

E

F

G

H

UPLAS DOOM

# Wood Grain

+31 79 330 10 00  
print.sign@blomsma.nl



Wood Grain

A



WG-248



WG-946



WG-1812



WG-833



WG-832

B



WG-478



WG-1219



WG-837



WG-1221



WG-2246

C



WG-835



WG-453



WG-256



WG-2944



WG-1380

D



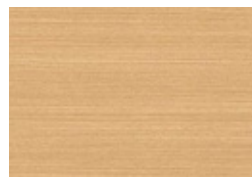
WG-243



WG-2839



WG-250



WG-2081H



WG-1814

E



WG-1346



WG-877



WG-2244



WG-845



WG-846

F



WG-1845



WG-699



WG-1358



WG-1815



WG-2115

G



WG-857



WG-242



WG-1382

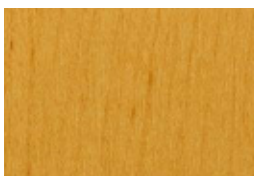


WG-836



WG-1058

H



WG-831



WG-709



WG-629



WG-878



WG-854



ⓘ Not recommended for use on compound curved surfaces

NEW New design

H A product number ending in "H" indicates horizontal grain direction

📷 Pattern is large scale; view full pattern width image at 3M.com/AMD

📄 Available in EX series or AR series; See pages 48 and 49

⚠️ Use caution during installation to prevent damage to product

+31 79 330 10 00  
print.sign@blomsma.nl



WG-2071 📷



WG-1360



WG-2080H



WG-1142 📷



WG-1140 📷 📄



WG-763



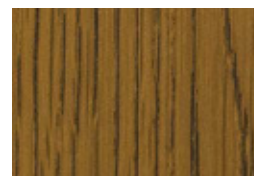
WG-865



WG-943 📷



WG-941 📷



WG-697



WG-841



WG-1359



WG-1375



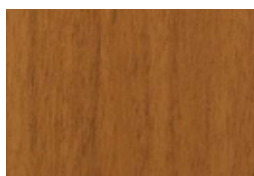
WG-694



WG-7022 📷



WG-879



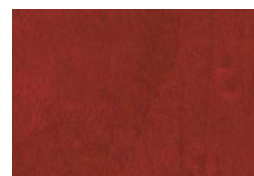
WG-2862



WG-364 📷



WG-940



WG-417 📷

## Wood Grain Gloss



WG-1711GN 📷



WG-763GN



WG-765GN



WG-1712GN



WG-364GN 📷



WG-763GN

# Wood Grain

+31 79 330 10 00  
print.sign@blomsma.nl



A  
B  
C  
D  
E  
F  
G  
H



WG-1703



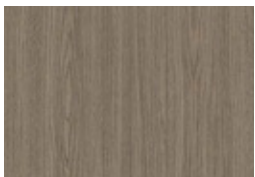
WG-1353



WG-696



WG-2088



WG-2086



WG-1336

WG-1336



WG-947



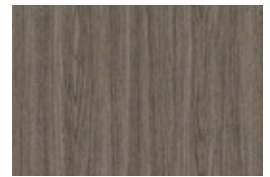
WG-2074



WG-2079



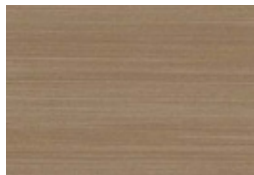
WG-2075



WG-2087



WG-1337



WG-2082H



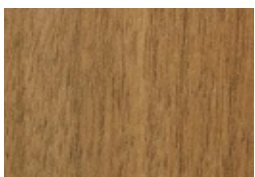
WG-1708



WG-2072



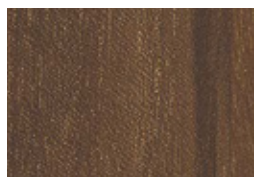
WG-1342



WG-1368



WG-1848



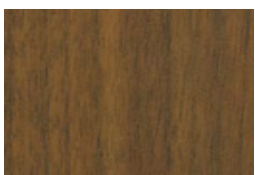
WG-1706



WG-1196



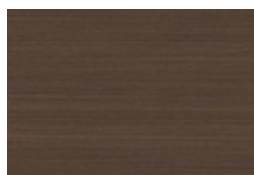
WG-695



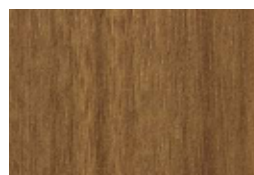
WG-2042



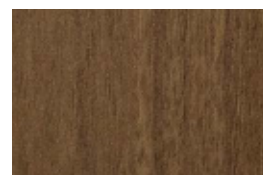
WG-1369



WG-2084H



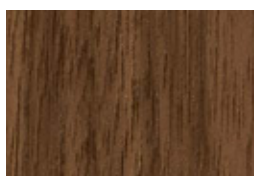
WG-1371



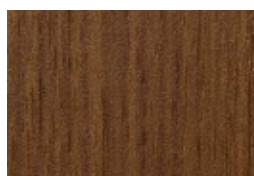
WG-1370



WG-1348



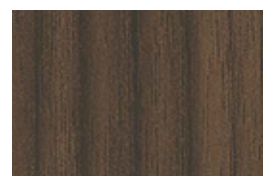
WG-1841



WG-1349



WG-1372



WG-1704



ⓘ Not recommended for use on compound curved surfaces

NEW New design

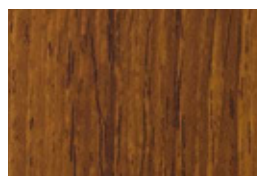
H A product number ending in "H" indicates horizontal grain direction

🖼️ Pattern is large scale; view full pattern width image at 3M.com/AMD

📐 Available in EX series or AR series; See pages 48 and 49

⚠️ Use caution during installation to prevent damage to product

+31 79 330 10 00  
print.sign@blomsma.nl



WG-157



WG-1057 🖼️



WG-430



WG-1064 🖼️



WG-1390



WG-2033



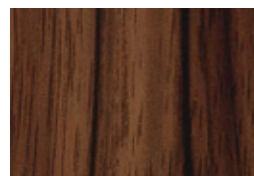
WG-2019



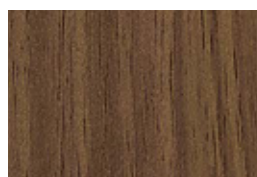
WG-693



WG-663



WG-7029 🖼️



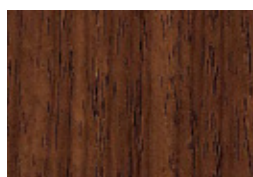
WG-1836



WG-1146



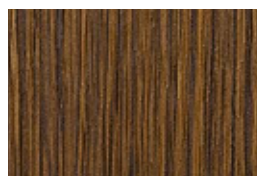
WG-1816



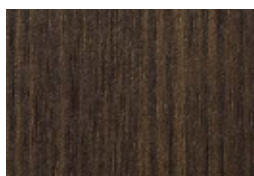
WG-7024 🖼️ 📐



WG-1147



WG-2048



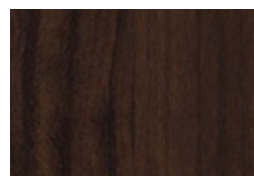
WG-1350



WG-7023 🖼️



WG-159



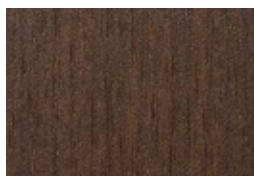
WG-1066



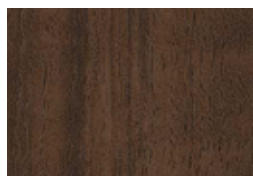
WG-1373



WG-1818



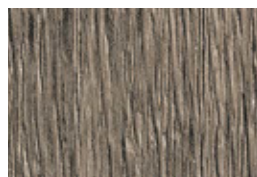
WG-1364



WG-1063 🖼️



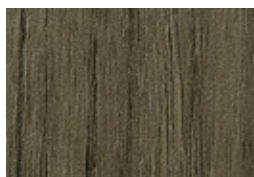
WG-664



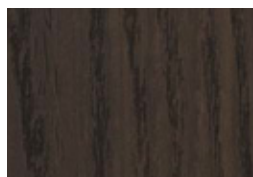
WG-2077 🖼️



WG-1044 🖼️ 📐



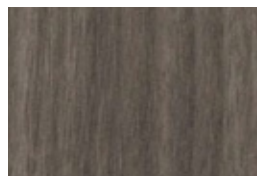
WG-1376



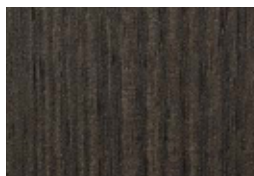
WG-156



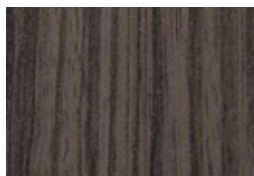
WG-1052



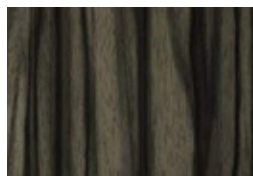
WG-1374



WG-1351



WG-1391



WG-1070 🖼️



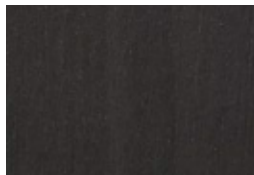
WG-1835



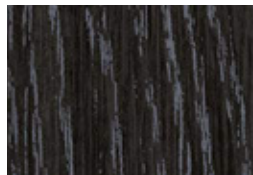
WG-2707 🖼️



WG-2047



WG-2041



WG-1050



WG-428 🖼️

A

B

C

D

E

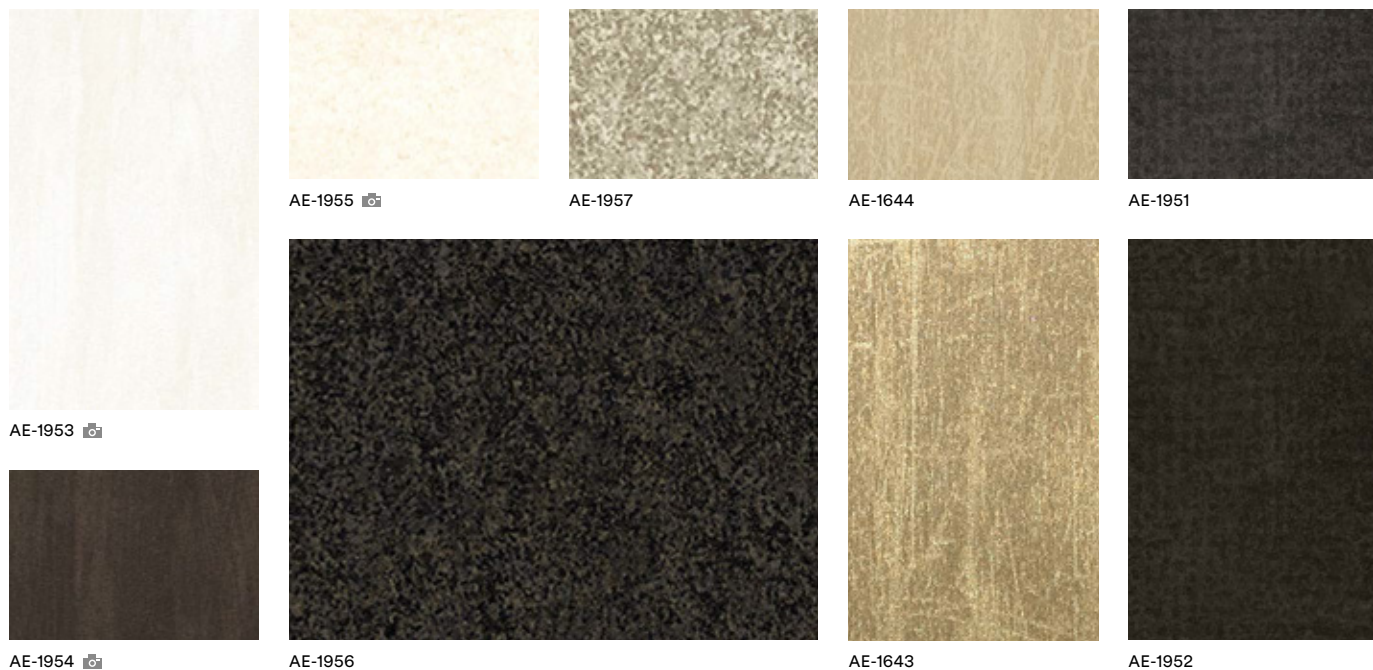
F

G

H

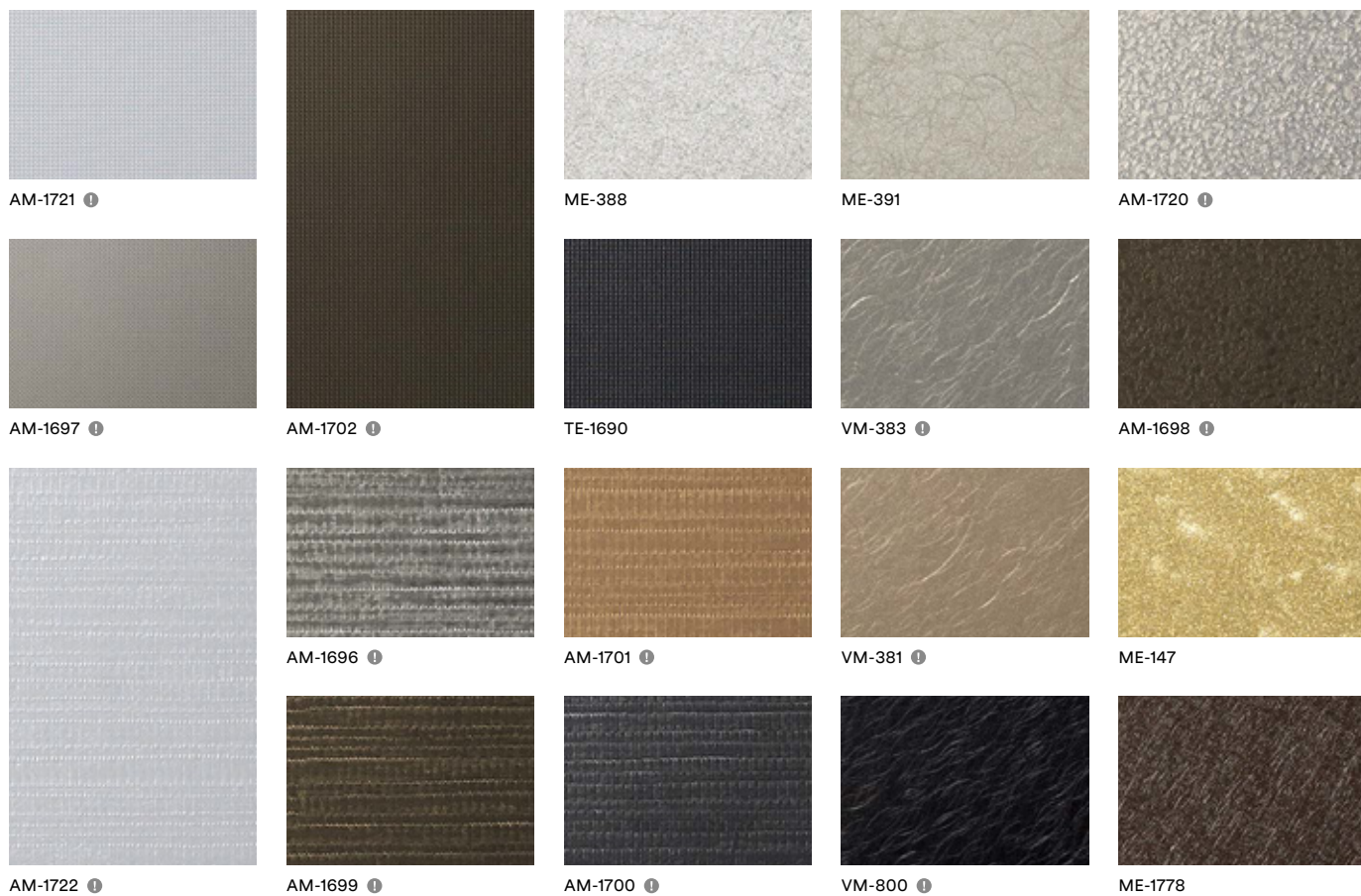
# Industrial Texture

A  
B  
C  
D



# Textured Metal

E  
F  
G  
H





ⓘ Not recommended for use on compound curved surfaces

NEW New design

H A product number ending in "H" indicates horizontal grain direction

📷 Pattern is large scale; view full pattern width image at 3M.com/AMD

F Available in EX series or AR series; See pages 48 and 49

⚠ Use caution during installation to prevent damage to product

+31 79 330 10 00  
print.sign@blomsma.nl



# Oxidized Metal



ME-2024 📷



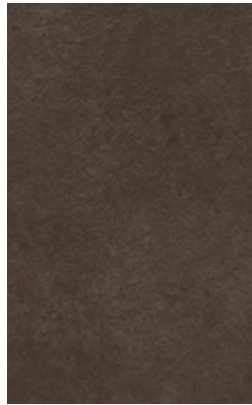
ME-2022 📷



VM-2037 ⓘ 📷



VM-2039 ⓘ 📷



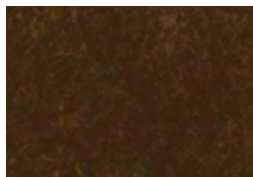
ME-2023 📷



VM-2038 ⓘ 📷



ME-1961



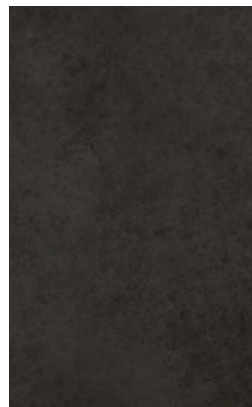
FA-592 ☀



FA-1530 📷 F



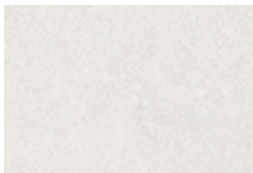
FA-1531 📷



RT-1827 📷



ME-2020



ME-2026



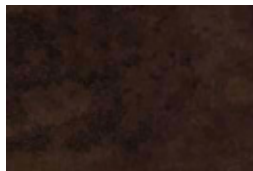
ME-1468



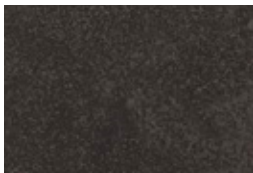
ME-2025



ME-1469



RT-1112



ME-2027



RT-1111



ME-2024 / VM-2037 / ME-2022 / ME-2020 / VM-2038 / ME-2023

A

B

C

D

E

F

G

H

OXIDIZED METAL

# Hairline Metal

A



ME-1716



ME-1466 **F**



ME-377



ME-904 **F**



ME-1435

B



ME-1434



ME-396 **F**



ME-1223



ME-1997



ME-486

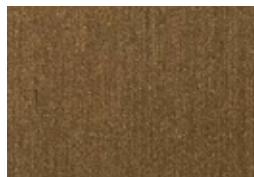
C



VM-306 **I**



VM-305 **I**



ME-1225



ME-1224

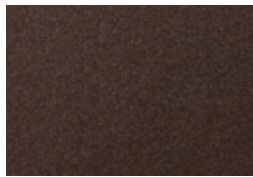


ME-380

D



ME-1781 **F**



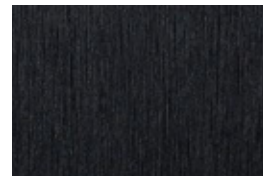
ME-1174 **S**



ME-379 **S**

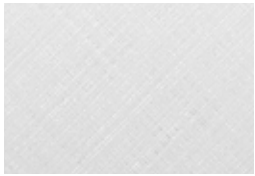


ME-1684 **F**

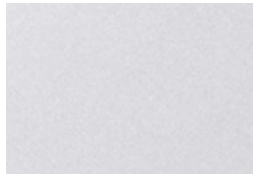


ME-1685 **F**

E



CH-1627



CH-1677



CH-1676



CH-2117



ME-1175

F



CH-1628 **F**



CH-1629 **F**



VM-1695 **I**



CH-2120



CH-2116

G



CH-1630 **F**



VM-1487 **I**



VM-1694 **I**

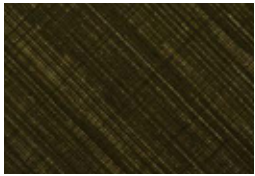


VM-2121 **I**



VM-2122 **I**

H



VM-1488 **I**



VM-1489 **I**



CH-1631 **F**



CH-2118



CH-2119



ⓘ Not recommended for use on compound curved surfaces

NEW New design

H A product number ending in "H" indicates horizontal grain direction

🖨️ Pattern is large scale; view full pattern width image at 3M.com/AMD

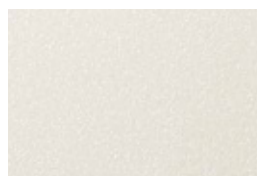
F Available in EX series or AR series; See pages 48 and 49

⚠️ Use caution during installation to prevent damage to product

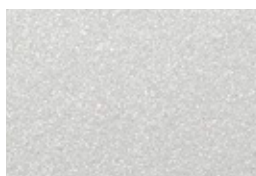
+31 79 330 10 00  
print.sign@blomsma.nl



# Metal



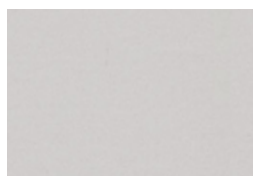
ME-1467 F



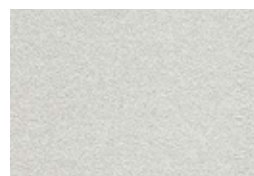
ME-433 F



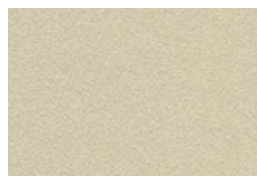
ME-432 F



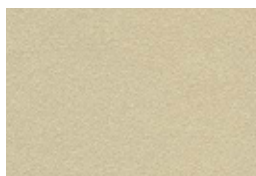
PA-184



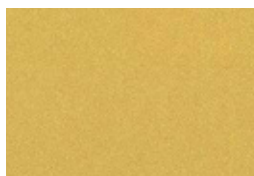
PA-045 F



PA-180



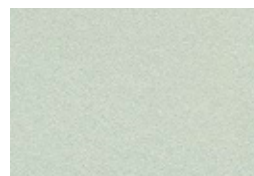
PA-046



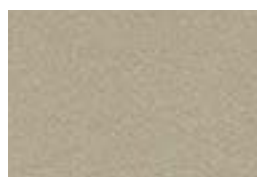
PA-683 F



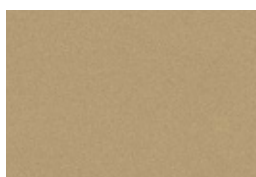
VM-168 ⓘ



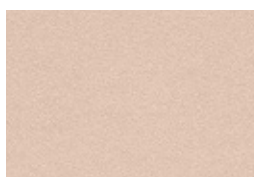
PA-175



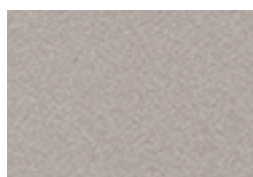
PA-039 F



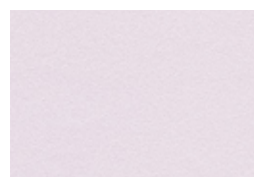
PA-390 F



PA-320



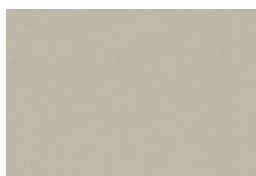
PA-038 F



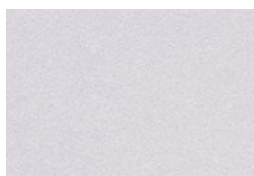
PA-179



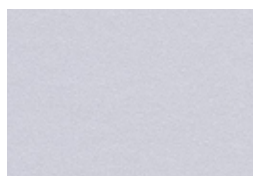
PA-187 F



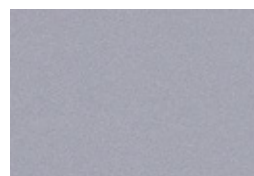
PA-183 F



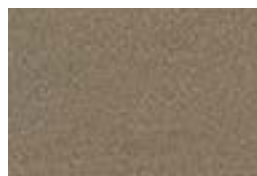
PA-178



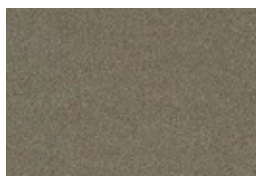
PA-177



PA-036



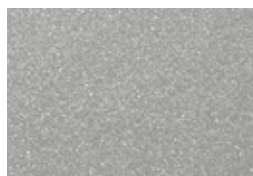
PA-181 F



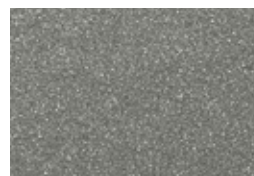
PA-185



PA-389 F

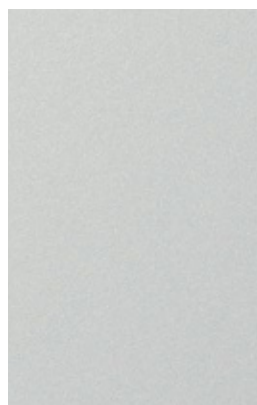


ME-1176



ME-431 F

# Effect



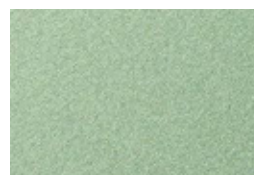
ET-1773



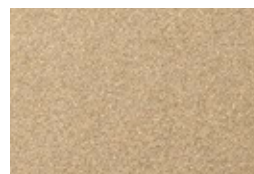
ET-1774



ET-1772



ET-1775



ET-1776

# Haku / Washi

+31 79 330 10 00  
print.sign@blomsma.nl



- I** Not recommended for use on compound curved surfaces
- NEW** New design
- H** A product number ending in "H" indicates horizontal grain direction

- C** Pattern is large scale; view full pattern width image at 3M.com/AMD
- F** Available in EX series or AR series; See pages 48 and 49
- ⚡** Use caution during installation to prevent damage to product

A



VM-2035 **I**



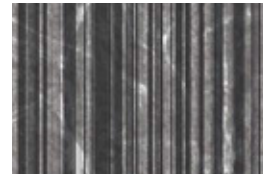
VM-1692 **C** **I**



VM-1691 **C** **I**



VM-1693 **C** **I**



FE-1733

B



VM-2090 **I**

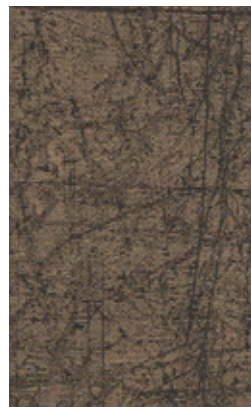


VM-2036 **I**

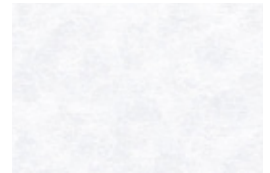
C



VM-452 **I**



VM-2034 **I**



FE-1727

D



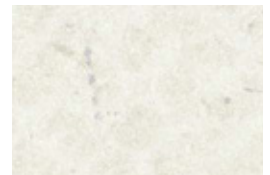
FE-1966



FE-1967



FE-1731



FE-1728

E

F



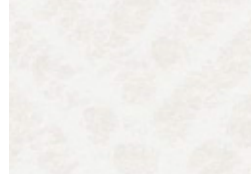
FE-1729



FE-1730



FA-1167

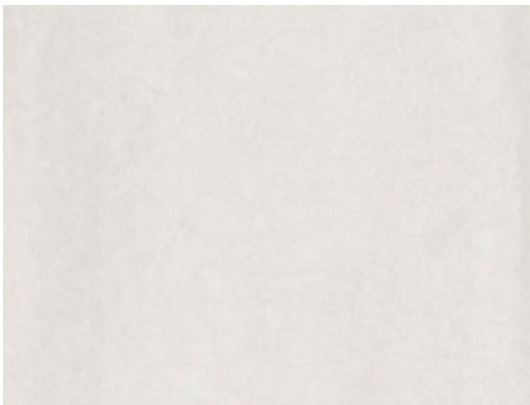


FA-1521

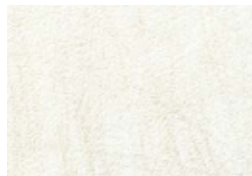


FE-1732

G



FE-1964 **C**

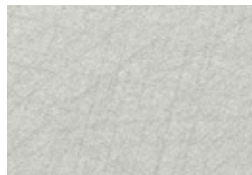


FA-690

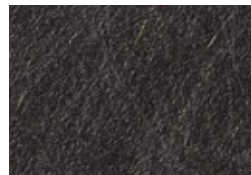


FA-1164

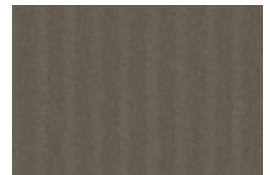
H



FA-1166



FA-688



FA-1163





+31 (0) 9 330 10 00  
print@blomsma.nl

**BLOMSMA**  
PRINT & SIGN

Advance your designs with  
the ever-expanding collection

# Textile

A



FE-804 ⓘ



FE-805 ⓘ



FE-813 ⓘ



FE-801 ⓘ



NU-1794 ⓘ

B



NU-2012



NU-1793 ⓘ



NU-1792 ⓘ



NU-1791 ⓘ



NU-2013



NU-2014



NU-2015



NU-2016



NU-2017

C



NU-1237 ⓘ



NU-1239 ⓘ



NU-1238 ⓘ



NU-1240 ⓘ



NU-1241 ⓘ

D



NU-1798 ⓘ



NU-1601 ⓘ



NU-1602 ⓘ



NU-1799 ⓘ



NU-1603 ⓘ

E



NU-1784 ⓘ



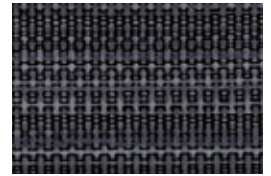
NU-1790 ⓘ



NU-1795



NU-1797



NU-1785 ⓘ



NU-1786 ⓘ

F



NU-1788 ⓘ



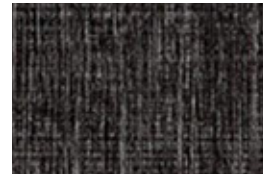
NU-1787 ⓘ



NU-1789 ⓘ



NU-1796



G



NU-1788 ⓘ



NU-1787 ⓘ



NU-1789 ⓘ



NU-1796



H



NU-1788 ⓘ



NU-1787 ⓘ



NU-1789 ⓘ



NU-1796





ⓘ Not recommended for use on compound curved surfaces

NEW New design

H A product number ending in "H" indicates horizontal grain direction

📷 Pattern is large scale; view full pattern width image at 3M.com/AMD

📄 Available in EX series or AR series; See pages 48 and 49

⚠ Use caution during installation to prevent damage to product

+31 79 330 10 00  
print.sign@blomsma.nl



NU-2006



NU-2007



NU-2010



NU-2008



NU-2003



NU-2004



NU-2011



SI-1234



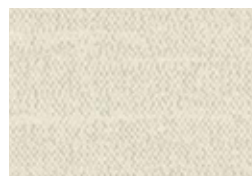
NU-2005 📷



NU-2009



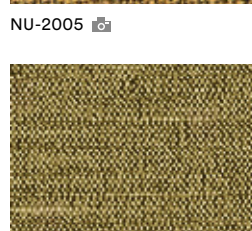
SI-1689



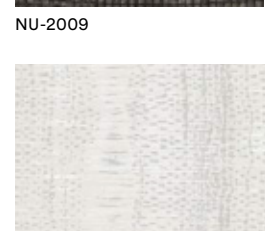
SI-1686



SI-1232



SI-1233



SI-1611



NU-2002 📷



NU-2001 📷



SI-1688



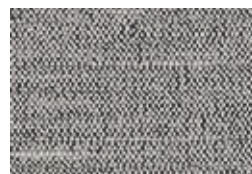
FA-1156



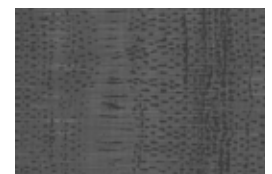
SI-1612



SI-1687



SI-1235



SI-1613

A

B

C

D

E

F

G

H



# Concrete

+31 79 330 10 00  
print.sign@blomsma.nl



A



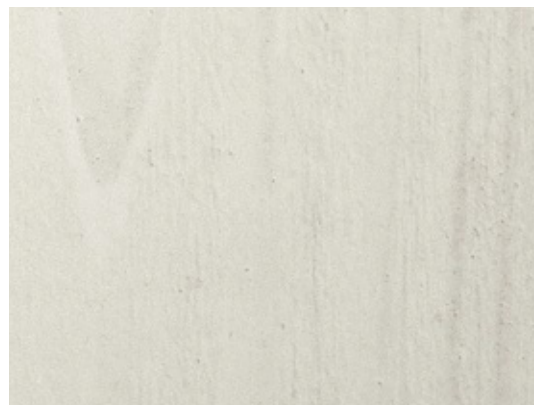
CN-1958



CN-1622



CN-1621



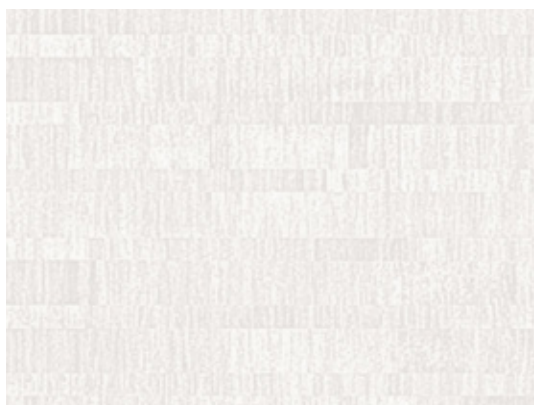
CN-1623 コンクリートウッド

B

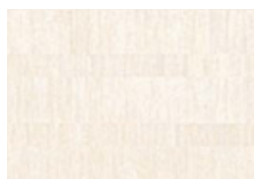
C

# Ceramic / Tile

D



FA-1678



FA-1679



FA-1962

E

F



FA-1527



FA-1680



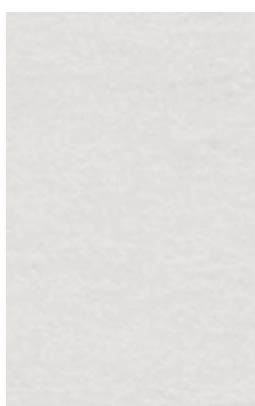
FA-1526



FA-1528

G

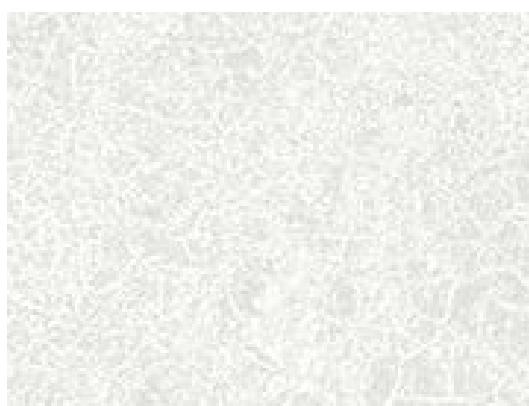
H



AE-1632



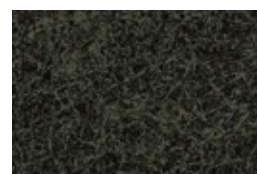
AE-1633



AE-1634



AE-1635



AE-1636



ⓘ Not recommended for use on compound curved surfaces

NEW New design

H A product number ending in "H" indicates horizontal grain direction

📷 Pattern is large scale; view full pattern width image at 3M.com/AMD

F Available in EX series or AR series; See pages 48 and 49

⚠ Use caution during installation to prevent damage to product

+31 79 330 10 00  
print.sign@blomsma.nl



# Mortar / Stucco



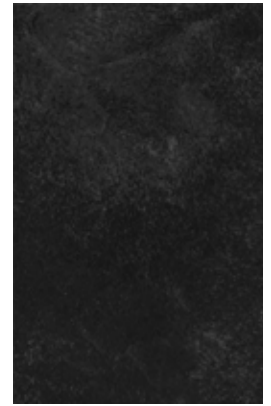
AE-1638



AE-1637



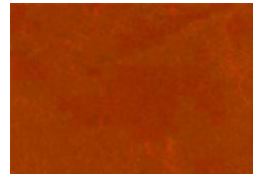
AE-1642



AE-1640



AE-1639



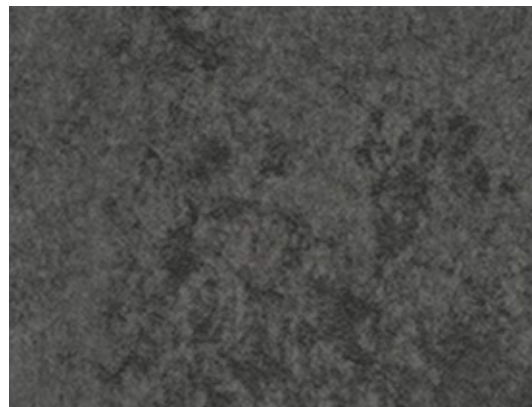
AE-1641



AE-1717 📷



AE-1718



AE-1719



AE-1645 📷



AE-1646 📷

# Stone



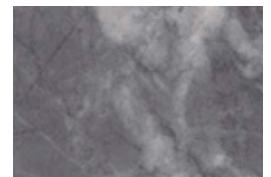
ST-1831 📷



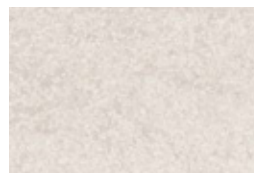
ST-1828



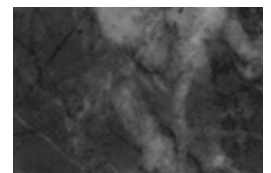
ST-1829



ST-1586 📷



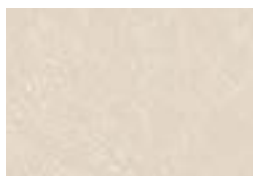
ST-1195 📷



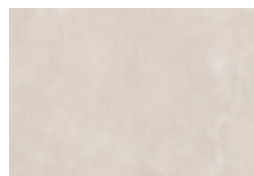
ST-1587 📷



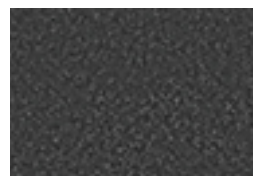
ST-1588 📷



ST-736 F



ST-737



ST-442 F



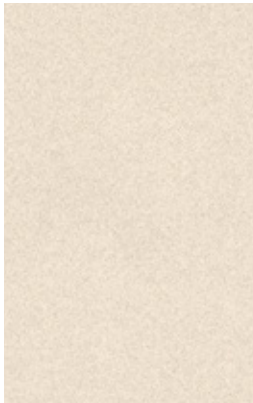
ST-1830

# Sand

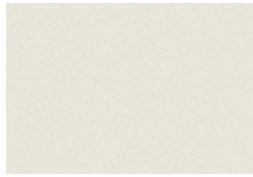
+31 79 330 10 00  
 print.sign@blomsma.nl



A



PC-672

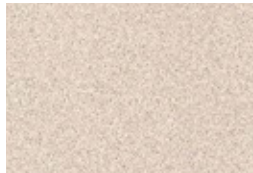


PC-1181



PC-1179

B

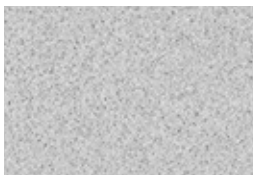


PC-491

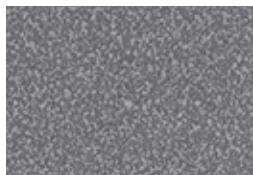


PC-1178

C



PC-758



PC-760

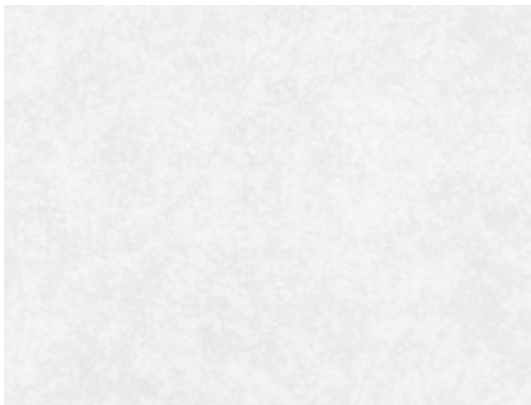


PC-760

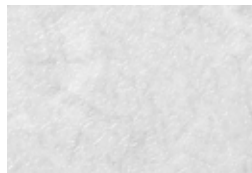
D

# Abstract

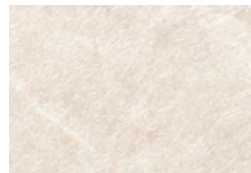
E



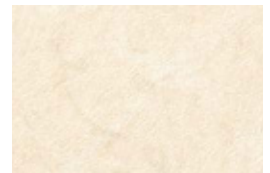
LZ-461



PT-735

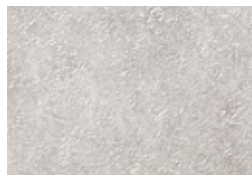


PT-346



PT-347

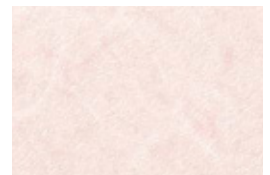
F



LZ-462

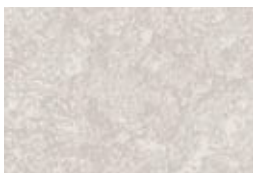


LZ-587

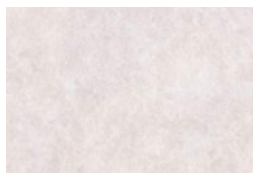


PT-345 **F**

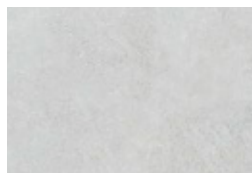
G



PG-197



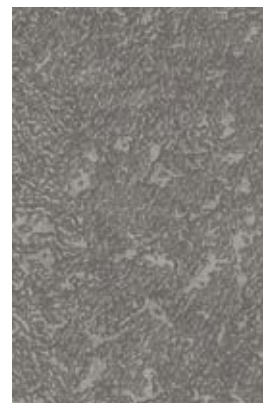
SE-570



SE-567 **F**



SE-568 **F**



PG-189

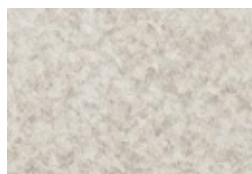
H



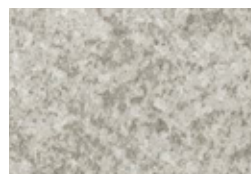
PG-193



PG-194



PG-195



PG-190

Sand / Abstract



ⓘ Not recommended for use on compound curved surfaces

NEW New design

H A product number ending in "H" indicates horizontal grain direction

🖨️ Pattern is large scale; view full pattern width image at 3M.com/AMD

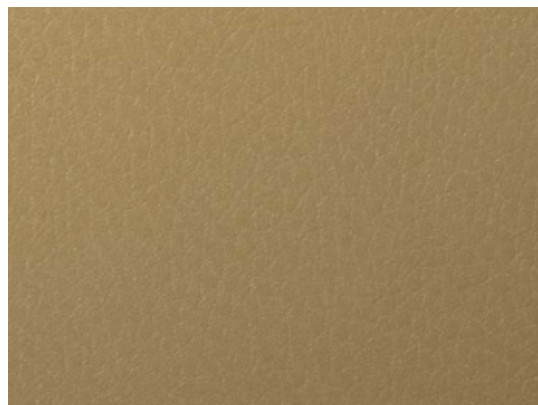
📄 Available in EX series or AR series; See pages 48 and 49

⚠️ Use caution during installation to prevent damage to product

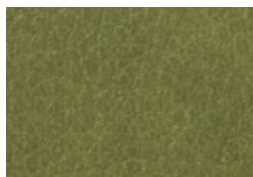
+31 79 330 10 00  
print.sign@blomsma.nl



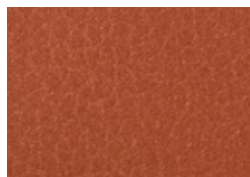
# Leather



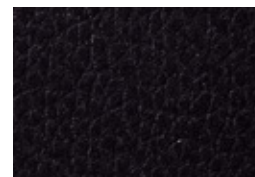
LE-1553



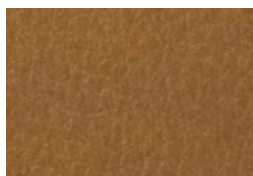
LE-2741



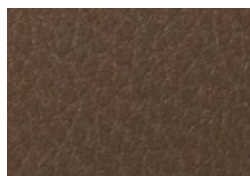
LE-2782



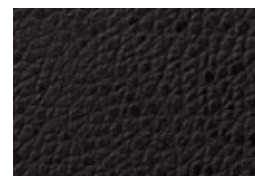
LE-1171



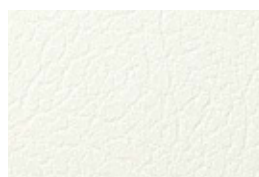
LE-2742



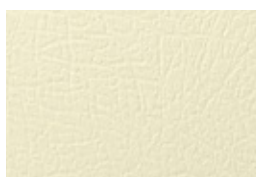
LE-1555



LE-1551



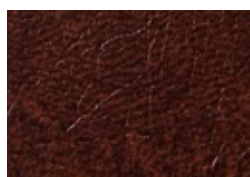
LE-1105



LE-1552 ⓘ



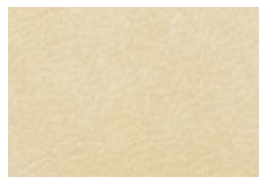
LE-137



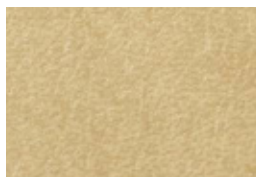
LE-517



LE-1551



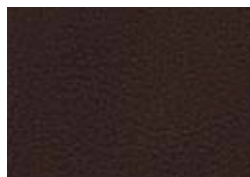
LE-018



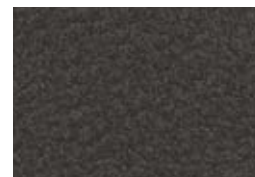
LE-2128



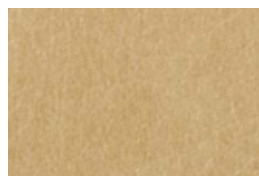
LE-1108



LE-783



LE-703 📄



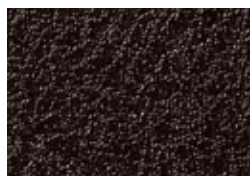
LE-2367



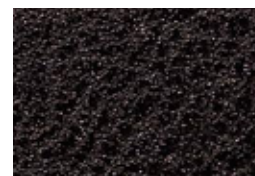
LE-1109



LE-1108



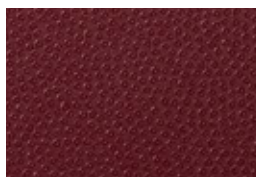
LE-1106



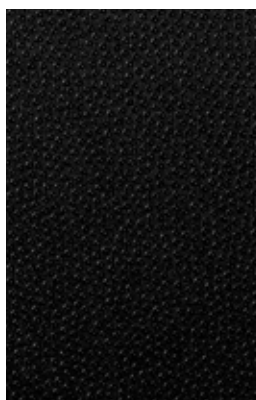
LE-1104



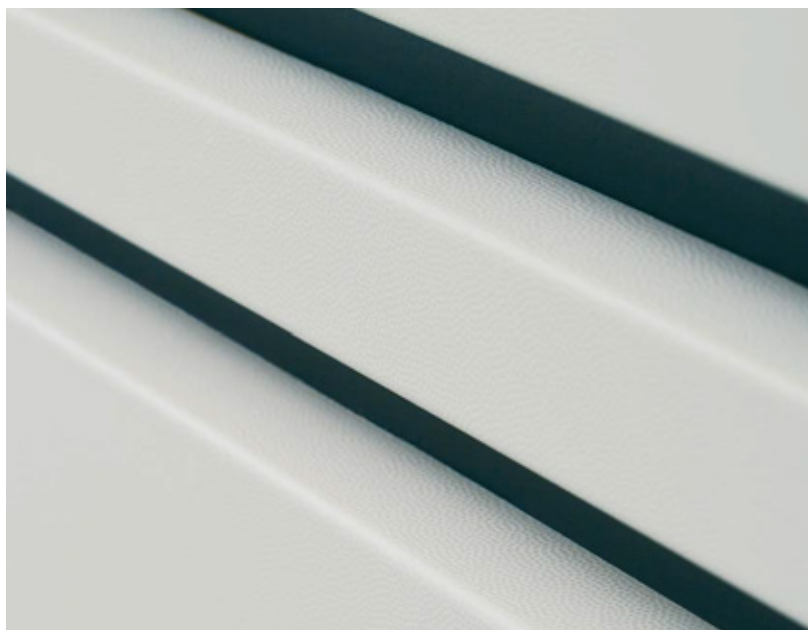
LE-1226



LE-1228



LE-1231



LE-1226

# Abstract

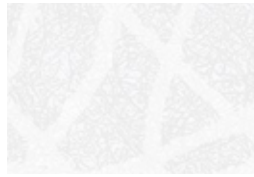
A  
B  
C  
D  
E  
F  
G  
H



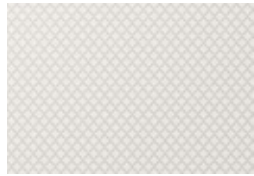
TE-1713



TE-1715



HS-1655



TE-1714



HS-1656



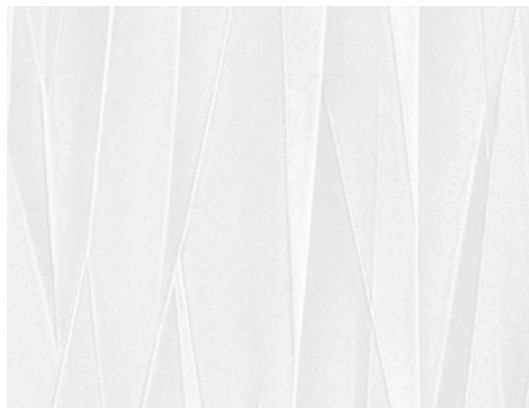
FA-1095



FA-1150



FA-1094



FA-1153



FA-1099



FA-1098



FA-1963



RS-1190 ⓘ



LW-1081



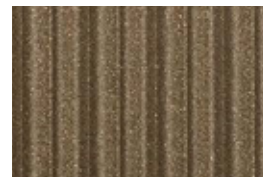
LW-1084



RS-1189 ⓘ



LW-1085



LW-1083



BW-1310 ⓘ ⓘ



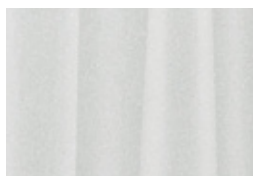
BW-1315 ⓘ ⓘ



BW-1312 ⓘ ⓘ



BW-1316 ⓘ ⓘ



BW-1311 ⓘ ⓘ



BW-1314 ⓘ ⓘ



FA-1161



BW-1313 ⓘ ⓘ



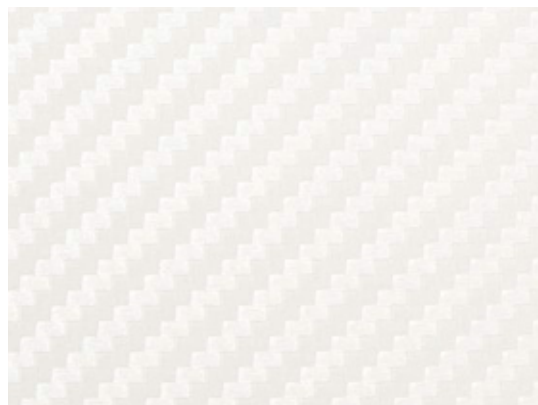
- ⓘ Not recommended for use on compound curved surfaces
- NEW New design
- H A product number ending in "H" indicates horizontal grain direction

- 🖨️ Pattern is large scale; view full pattern width image at 3M.com/AMD
- 📄 Available in EX series or AR series; See pages 48 and 49
- ⚠️ Use caution during installation to prevent damage to product

+31 79 330 10 00  
print.sign@blomsma.nl



# Carbon



CA-419



CA-418



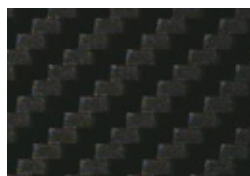
CA-420



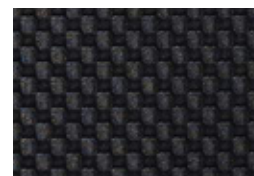
CA-1170



CA-422



CA-421



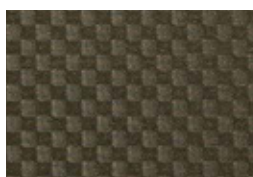
TE-1653



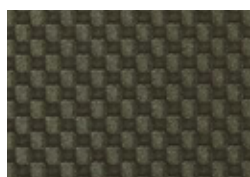
TE-1650



TE-1651

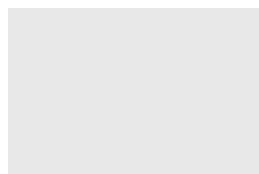


TE-1652



VM-1486 ⓘ

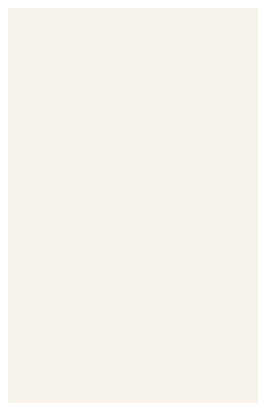
# High Gloss



HG-1205 ⓘ



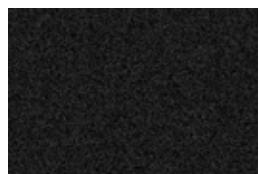
HG-1996 ⓘ



HG-1994 ⓘ



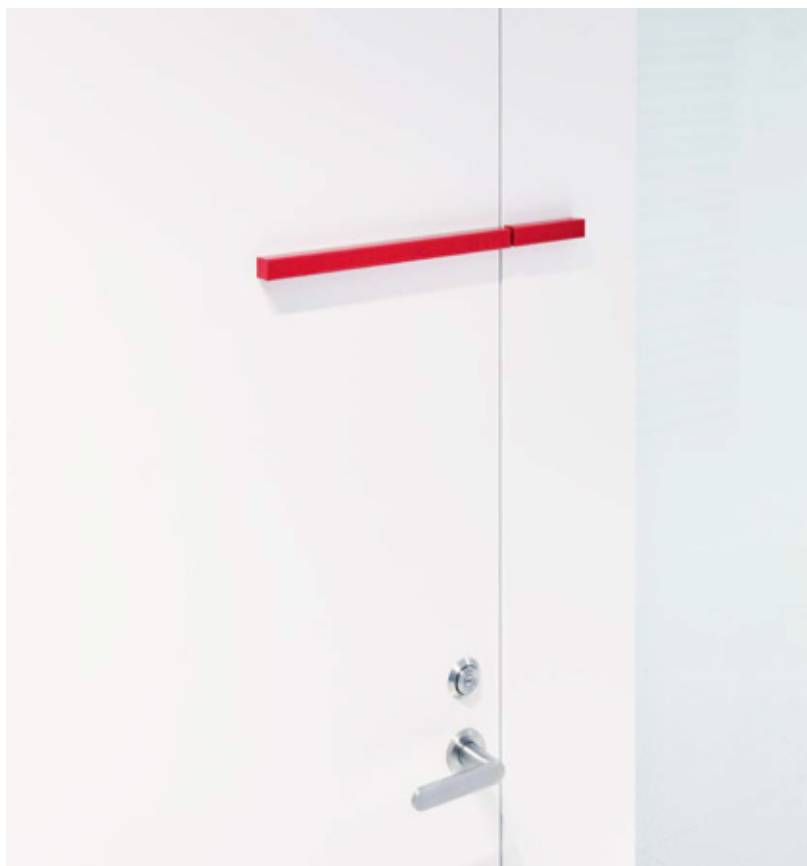
HG-1511 ⓘ



HG-1995 ⓘ



HG-1201 ⓘ



HG-1996

# Solid Color

+31 79 330 10 00  
print.sign@blomsma.nl



A



PS-1904MT ⓘ PS-1187 PS-1188 PS-959 ⓘ PS-503 PS-1989MT ⓘ

B



PS-1864MT ⓘ PS-998 PS-976 ⓘ PS-975 PS-957 ⓘ PS-955 ⓘ

C



PS-090 PS-1186 PS-983 PS-1185 PS-1865MT ⓘ PS-954 ⓘ

D



PS-048 PS-073 PS-1184 PS-1437 PS-2091MT ⓘ PS-952

E



PS-075 PS-091 PS-1438 PS-971 PS-1866MT ⓘ PS-2092MT ⓘ

F



PS-093 PS-1863MT ⓘ PS-2095MT ⓘ PS-2099MT ⓘ PS-950 PS-2093MT ⓘ ⓘ

G



PS-027 PS-2098MT ⓘ PS-2096MT ⓘ ⓘ PS-949 PS-2100MT ⓘ ⓘ PS-1869MT ⓘ ⓘ

H



PS-022 PS-074 PS-1867MT ⓘ ⓘ PS-1439 PS-992 PS-885

I



PS-034 PS-292 PS-1005 PS-2101MT ⓘ ⓘ PS-948 PS-504

J



PS-110 PS-293 PS-2094MT ⓘ ⓘ PS-999 PS-1183 PS-1870MT ⓘ ⓘ

K



PS-294 PS-2097MT ⓘ ⓘ PS-1440



ⓘ Not recommended for use on compound curved surfaces

NEW New design

H A product number ending in "H" indicates horizontal grain direction

🖨️ Pattern is large scale; view full pattern width image at 3M.com/AMD

F Available in EX series or AR series; See pages 48 and 49

⚠️ Use caution during installation to prevent damage to product

+31 79 330 10 00  
print.sign@blomsma.nl



A

B

C

D

E

F

G

H

I

J

K

# Abrasion Resistant

+31 79 330 10 00  
print.sign@blomsma.nl



## For High-Traffic Applications

A							
	FW-1138AR	FW-1293AR	FW-236AR (AR-1119)	FW-1280AR	FW-233AR	WG-7024AR	FW-330AR
B							
	FW-7017AR (AR-1664)	FW-1122AR	FW-7011AR	FW-1022AR	WG-1372AR	FW-338AR	FW-627AR
C							
	FW-1129AR	FW-1130HAR	FW-337AR	FW-1294AR	FW-1121HAR	FW-625AR (AR-1120)	FW-1751AR
D							
	ME-1467AR	ME-433AR	ME-432AR	PA-183AR (AR-1246)	PA-181AR (AR-1663)	PA-389AR (AR-1118)	ME-431AR
E							
	PA-045AR (AR-1117)	PA-187AR	PA-683AR	CH-1628AR	CH-1629AR (AR-1723)	ME-009AR ((I)AR-1724)	CH-1630AR
F							
	ME-1466AR (AR-1725)	ME-904AR	ME-396AR	ME-1781AR (AR-1726)	ME-1684AR	ME-1685AR	CH-1631AR
G							
	ST-011AR (AR-1247)	FA-1678AR	FA-1527AR	ST-736AR (AR-1116)	SE-567AR (AR-1248)	SE-010AR (AR-1251)	FA-1530AR
H							
	AE-1632AR	PS-004AR (AR-1661)	FA-1526AR	PT-345AR (AR-1250)	SE-568AR (AR-1249)	AE-1633AR	AE-1636AR
I							
	PS-002AR	PS-001AR	PS-003AR (AR-1115)	PS-005AR	PS-006AR <b>B</b>	PS-007AR <b>B</b> (AR-1662)	PS-008AR <b>B</b>
J							

**B** Can be used with chalk for blackboard application



ⓘ Not recommended for use on compound curved surfaces

NEW New design

H A product number ending in "H" indicates horizontal grain direction

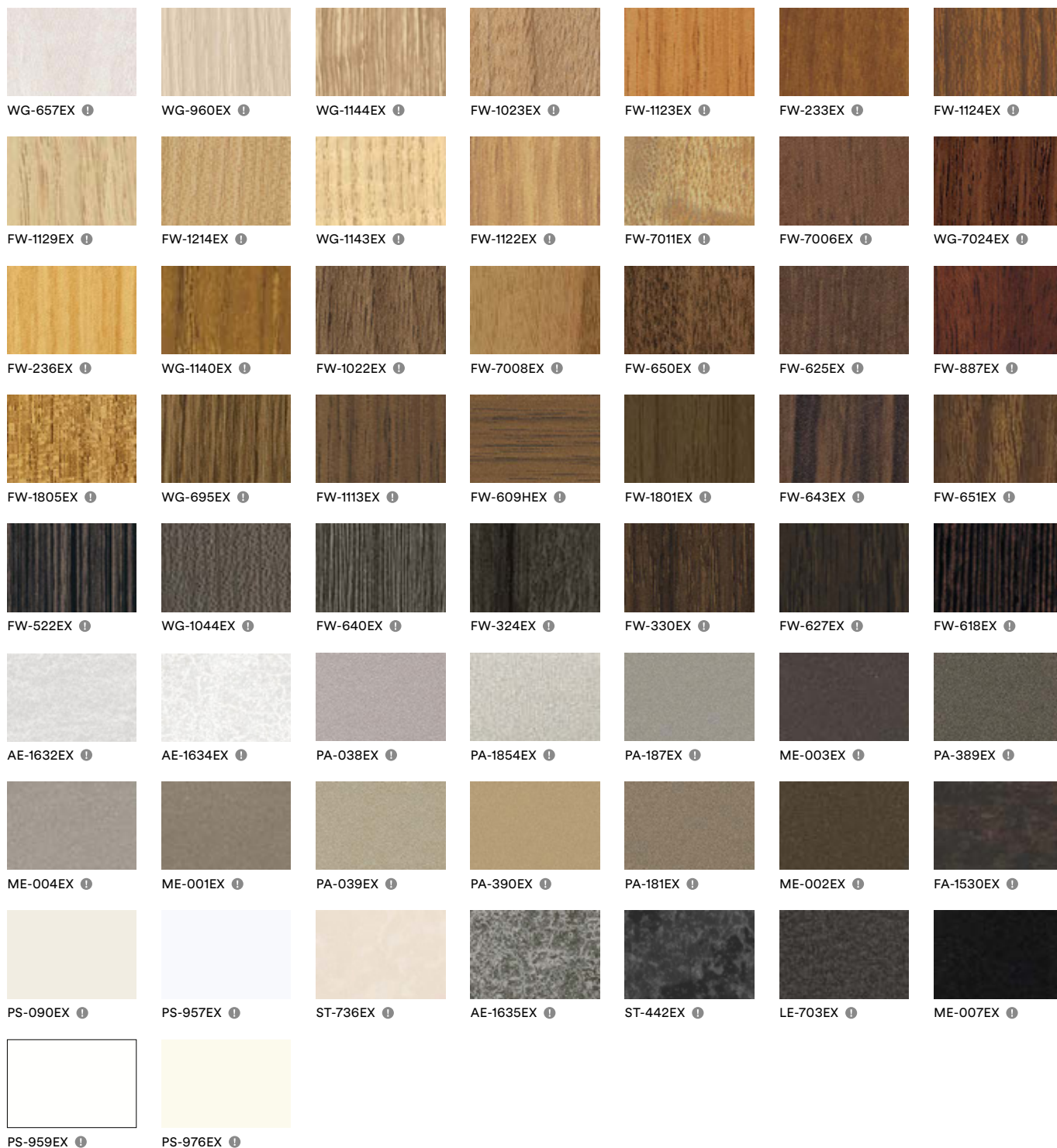
🖨️ Pattern is large scale; view full pattern width image at 3M.com/AMD

📄 Available in EX series or AR series; See pages 48 and 49

⚠️ Use caution during installation to prevent damage to product

+31 79 330 10 00  
print.sign@blomsma.nl

## For Exterior Applications



**Whiteboard**  
For Dry Erase  
**Whiteboard Application**







Product Code	page, column, row
PS-983	46 3-C
PS-992	46 5-H
PS-998	46 2-B
PS-999	46 4-J
PS-1005	46 3-I
PS-1008	47 5-H
PS-1009	47 5-I
PS-1010	47 2-F
PS-1183	46 5-J
PS-1184	46 3-D
PS-1185	46 4-C
PS-1186	46 2-C
PS-1187	46 2-A
PS-1188	46 3-A
PS-1436	47 4-A
PS-1437	46 4-D
PS-1438	46 3-E
PS-1439	46 4-H
PS-1440	46 3-K
PS-1441	47 3-A
PS-1442	47 1-C
PS-1443	47 1-E
PS-1444	47 1-G
PS-1446	47 2-E
PS-1447	47 2-K
PS-1448	47 3-B
PS-1450	47 3-E
PS-1452	47 4-B
PS-1454	47 4-E
PS-1455	47 4-G
PS-1457	47 4-J
PS-1459	47 5-E
PS-1820	47 5-C
PS-1821	47 1-J
PS-1822	47 1-K
PS-1823	47 4-I
PS-1824	47 4-K
PS-1825	47 3-J
PS-1826	47 3-K
PS-1863MT	13 3-F
	46 2-F
PS-1864MT	13 2-G
	46 1-B
PS-1865MT	13 1-E
	46 5-C
PS-1866MT	13 2-E
	46 5-E
PS-1867MT	13 5-F
	46 3-H
PS-1869MT	13 4-D
	46 6-G
PS-1870MT	13 5-D
	46 6-J
PS-1904MT	13 1-F
	46 1-A
PS-1989MT	13 1-D
	46 6-A
PS-2060	47 4-H
PS-2091MT	13 2-D
	46 5-D
PS-2092MT	13 3-D
	46 6-E
PS-2093MT	13 3-E
	46 6-F
PS-2094MT	13 4-E
	46 3-J
PS-2095MT	13 3-G
	46 3-F
PS-2096MT	13 4-F
	46 3-G
PS-2097MT	13 5-G
	46 2-K
PS-2098MT	13 1-H
	46 2-G
PS-2099MT	13 2-H
	46 4-F
PS-2100MT	13 4-G
	46 5-G
PS-2101MT	13 5-H
	46 4-I

Product Code	page, column, row
<b>PT   Abstract</b>	
PT-345	42 5-F

Product Code	page, column, row
PT-346	42 4-E
PT-347	42 5-E
PT-735	42 3-E

Product Code	page, column, row
<b>PWF   Whiteboard</b>	
PWF-500	49 5-J

Product Code	page, column, row
<b>RS   Entertainment</b>	
RS-1189	44 3-F
RS-1190	44 3-E

Product Code	page, column, row
<b>RT   Aged Metal</b>	
RT-1111	33 2-H
RT-1112	33 2-G
RT-1827	33 4-C

Product Code	page, column, row
<b>SE   Abstract</b>	
SE-567	42 3-G
SE-568	42 4-G
SE-570	42 2-G

Product Code	page, column, row
<b>SI   Silk</b>	
SI-1232	39 3-F
SI-1233	39 4-F
SI-1234	39 3-D
SI-1235	39 4-H
SI-1611	39 5-F
SI-1612	39 5-G
SI-1613	39 5-H
SI-1686	39 3-E
SI-1687	39 3-H
SI-1688	39 3-G
SI-1689	39 1-E

Product Code	page, column, row
<b>ST   Stone</b>	
ST-442	41 4-H
ST-736	41 2-H
ST-737	41 3-H
ST-1195	41 3-G
ST-1586	41 5-F
ST-1587	41 5-G
ST-1588	41 1-H
ST-1828	41 3-F
ST-1829	41 4-F
ST-1830	41 5-H
ST-1831	41 1-F
ST-1911MT	15 3-A
ST-1912MT	15 2-C
ST-1914MT	15 1-A
ST-1915MT	15 3-B
ST-1916MT	15 4-A
ST-1918MT	15 1-C
ST-1919MT	15 2-A
ST-1920MT	15 4-B
ST-1927MT	15 3-C

Product Code	page, column, row
<b>SU   Suede</b>	
SU-2231MT	12 4-A
SU-2232MT	12 1-A
SU-2233MT	12 3-A
SU-2234MT	12 3-C
SU-2235MT	12 4-C

Product Code	page, column, row
<b>TE   Advanced Metallic</b>	
TE-1650	45 1-C
TE-1651	45 2-C
TE-1652	45 3-C
TE-1653	45 5-B
TE-1690	32 3-F

Product Code	page, column, row
TE-1713	44 1-A
TE-1714	44 3-B
TE-1715	44 2-A

Product Code	page, column, row
<b>VM   Metallic</b>	
VM-168	35 4-B
VM-305	34 2-C
VM-306	34 1-C
VM-381	32 4-G
VM-383	32 4-F
VM-452	36 1-C
VM-800	32 4-H
VM-1486	45 4-C
VM-1487	34 2-G
VM-1488	34 1-H
VM-1489	34 2-H
VM-1691	36 3-A
VM-1692	36 2-A
VM-1693	36 4-A
VM-1694	34 3-G
VM-1695	34 3-F
VM-1855MT	13 1-A
VM-1856MT	13 2-A
VM-1858MT	13 4-B
VM-1859MT	13 3-A
VM-1860MT	13 4-A
VM-1861MT	13 5-A
VM-1862MT	13 5-B
VM-1990MT	13 1-B
VM-1991MT	13 2-B
VM-2034	36 4-C
VM-2035	36 1-A
VM-2036	36 5-B
VM-2037	33 4-A
VM-2038	33 4-B
VM-2039	33 5-A
VM-2090	36 2-B
VM-2121	34 4-G
VM-2122	34 5-G

Product Code	page, column, row
<b>WG   Wood Grain</b>	
WG-156	31 4-F
WG-157	31 1-A
WG-159	31 4-D
WG-166	27 3-G
WG-242	28 2-G
WG-243	28 1-D
WG-247	27 3-B
WG-248	28 1-A
WG-250	28 3-D
WG-256	28 3-C
WG-364	29 3-D
WG-364GN	29 2-H
WG-376	27 3-D
WG-417	29 5-D
WG-428	31 5-H
WG-430	31 3-A
WG-453	28 2-C
WG-467	27 5-C
WG-478	28 1-B
WG-629	28 3-H
WG-657	27 1-A
WG-662	27 4-E
WG-663	31 4-B
WG-664	31 5-E
WG-693	31 3-B
WG-694	29 4-C
WG-695	30 5-F
WG-696	30 1-B
WG-697	29 5-B
WG-699	28 2-F
WG-709	28 2-H
WG-763	29 1-B
WG-763GN	29 2-F
WG-765GN	29 2-G
WG-831	28 1-H
WG-832	28 5-A
WG-833	28 4-A
WG-835	28 1-C
WG-836	28 4-G
WG-837	28 3-B

Product Code	page, column, row
WG-841	29 1-C
WG-845	28 4-E
WG-846	28 5-E
WG-854	28 5-H
WG-857	28 1-G
WG-865	29 2-B
WG-877	28 2-E
WG-878	28 4-H
WG-879	29 1-D
WG-940	29 4-D
WG-941	29 4-B
WG-943	29 3-B
WG-946	28 2-A
WG-947	30 1-D
WG-960	27 3-E
WG-964	27 5-F
WG-1044	31 2-F
WG-1046	27 4-B
WG-1050	31 4-H
WG-1052	31 5-F
WG-1057	31 2-A
WG-1058	28 5-G
WG-1063	31 4-E
WG-1064	31 4-A
WG-1066	31 5-D
WG-1067	27 4-A
WG-1070	31 4-G
WG-1071	27 5-A
WG-1140	29 5-A
WG-1141	27 2-F
WG-1142	29 4-A
WG-1143	27 1-G
WG-1144	27 4-G
WG-1146	31 2-C
WG-1147	31 5-C
WG-1196	30 4-F
WG-1219	28 2-B
WG-1220	27 4-D
WG-1221	28 4-B
WG-1336	30 2-C
WG-1337	30 1-E
WG-1339	27 5-B
WG-1340	27 1-E
WG-1342	30 5-E
WG-1343	27 1-C
WG-1344	27 1-D
WG-1346	28 1-E
WG-1348	30 1-H
WG-1349	30 3-H
WG-1350	31 2-D
WG-1351	31 2-G
WG-1353	30 2-A
WG-1355	27 4-F
WG-1357	27 3-F
WG-1358	28 3-F
WG-1359	29 2-C
WG-1360	29 2-A
WG-1364	31 3-E
WG-1365	27 2-A
WG-1368	30 1-F
WG-1369	30 2-G
WG-1370	30 5-G
WG-1371	30 4-G
WG-1372	30 4-H
WG-1373	31 1-E
WG-1374	31 1-G
WG-1375	29 3-C
WG-1376	31 3-F
WG-1378	27 2-E
WG-1380	28 5-C
WG-1382	28 3-G
WG-1390	31 5-A
WG-1391	31 3-G
WG-1392H	27 4-H
WG-1703	30 1-A
WG-1704	30 5-H
WG-1705	27 3-C
WG-1706	30 3-F
WG-1708	30 3-E
WG-1709	27 1-B
WG-1710	27 5-H
WG-1711GN	29 1-F
WG-1712GN	29 1-H
WG-1812	28 3-A
WG-1814	28 5-D

Product Code	page, column, row
WG-1815	28 4-F
WG-1816	31 3-C
WG-1818	31 2-E
WG-1835	31 5-G
WG-1836	31 1-C
WG-1837	27 2-H
WG-1838	27 1-F
WG-1840	27 1-H
WG-1841	30 2-H
WG-1845	28 1-F
WG-1846	27 2-B
WG-1848	30 2-F
WG-2019	31 2-B
WG-2033	31 1-B
WG-2041	31 3-H
WG-2042	30 1-G
WG-2047	31 2-H
WG-2048	31 1-D
WG-2049	27 2-C
WG-2070	27 5-D
WG-2071	29 1-A
WG-2072	30 4-E
WG-2073	27 5-E
WG-2074	30 2-D
WG-2075	30 4-D
WG-2076	27 4-C
WG-2077	31 1-F
WG-2078	27 3-A
WG-2079	30 3-D
WG-2080H	29 3-A
WG-2081H	28 4-D
WG-2082H	30 2-E
WG-2083H	27 2-D
WG-2084H	30 3-G
WG-2085	27 2-G
WG-2086	30 1-C
WG-2087	30 5-D
WG-2088	30 2-B
WG-2115	28 5-F
WG-2244	28 3-E
WG-2246	28 5-B
WG-2705	27 3-H
WG-2707	31 1-H
WG-2839	28 2-D
WG-2860	27 5-G
WG-2862	29 2-D
WG-2944	28 4-C
WG-7022	29 5-C
WG-7023	31 3-D
WG-7024	31 4-C
WG-7029	31 5-B

Product Code	page, column, row
<b>WH   Whiteboard</b>	
WH-111	49 4-J





Product Code	page, column, row
FW-1271	17 3-D
FW-1272	18 4-G
FW-1273	22 4-A
FW-1302	19 2-C
FW-1745	18 2-A
FW-1805	20 2-E
FW-7007	25 3-A
FW-7015	24 4-A
WG-157	31 1-A
WG-430	31 3-A
WG-1140	29 5-A
WG-1141	27 2-F
WG-1376	31 3-F
WG-7022	29 5-C
WG-7023	31 3-D

## Tineo

FW-1274	17 1-D
FW-1275	25 2-B
WG-1336	30 2-C
WG-1337	30 1-E

## Tong

FW-640	25 4-B
--------	--------

## Walnut

DW-1881MT	10 1-G
DW-1882MT	11 1-A
DW-1889MT	8 4-G
DW-1890MT	9 1-G
DW-1891MT	9 2-G
DW-1899MT	11 1-B
DW-1900HMT	11 1-C
DW-1992MT	11 2-F
DW-2197MT	8 1-A
DW-2203MT	8 1-F
DW-2211MT	9 4-F
DW-2212MT	9 2-E
DW-2213MT	11 2-B
DW-2214MT	11 3-A
DW-2215MT	11 2-D
DW-2217MT	11 3-C
DW-2218MT	10 1-A
DW-2221MT	10 1-E
DW-2222MT	10 4-E
FW-233	21 3-G
FW-330	24 4-D
FW-332	23 4-C
FW-338	24 1-C
FW-501	21 2-D
FW-502	21 1-E
FW-510	23 3-D
FW-608H	21 3-B
FW-609H	23 4-B
FW-613	22 2-E
FW-614	23 2-D
FW-650	23 4-A
FW-651	24 1-B
FW-795	21 3-C
FW-1020	23 2-G
FW-1021	22 4-E
FW-1022	22 3-D
FW-1023	20 2-B
FW-1113	23 3-A
FW-1121H	22 4-D
FW-1122	20 1-B
FW-1123	21 2-B
FW-1207	17 2-E
FW-1208	17 3-C
FW-1209	17 2-C
FW-1210	17 2-F
FW-1276	21 2-E
FW-1277	22 4-C
FW-1331	21 4-C
FW-1683	17 3-A
FW-1734H	20 3-D
FW-1735H	20 1-F
FW-1736H	25 1-A
FW-1743	21 4-A
FW-1744	23 2-A
FW-1751	25 1-E
FW-1752H	24 4-E
FW-1753H	25 1-D
FW-1754	19 3-A
FW-1755	20 2-D

Product Code	page, column, row
FW-1768	23 1-A
FW-1769	22 2-G
FW-1771H	20 4-B
FW-1801	23 4-D
FW-1983	19 3-F
FW-7006	23 1-G
FW-7008	22 2-F
FW-7009	24 2-C
WG-1365	27 2-A
WG-1368	30 1-F
WG-1369	30 2-G
WG-1370	30 5-G
WG-1371	30 4-G
WG-1372	30 4-H
WG-1373	31 1-E
WG-1374	31 1-G
WG-1703	30 1-A
WG-1704	30 5-H
WG-1705	27 3-C
WG-1706	30 3-F
WG-1708	30 3-E
WG-1709	27 1-B
WG-1836	31 1-C
WG-1837	27 2-H
WG-1840	27 1-H
WG-1841	30 2-H
WG-1848	30 2-F
WG-2019	31 2-B
WG-2033	31 1-B
WG-2041	31 3-H
WG-2042	30 1-G
WG-2080H	29 3-A
WG-2081H	28 4-D
WG-2082H	30 2-E
WG-2083H	27 2-D
WG-2084H	30 3-G
WG-2860	27 5-G
WG-2862	29 2-D

## Wenge

FW-618	24 4-G
FW-1126	24 1-G
FW-1763	22 1-D
FW-1984	25 3-E
FW-1985	25 3-F

## Zebra Wood

FW-606H	24 2-A
FW-607H	24 4-C
FW-656	22 4-F
FW-1133	24 3-C
FW-1134	24 1-A
WG-941	29 4-B
WG-1390	31 5-A
WG-1391	31 3-G
WG-1392H	27 4-H
WG-2705	27 3-H
WG-2707	31 1-H

+31 79 330 10 00  
print.sign@blomsma.nl







3M Commercial Solutions  
3M Center, Building 220-12E-04  
St. Paul, MN 55144-1000

Phone 888-650-3497  
Web 3M.com/DINOC

Ver.1

+31 79 330 10 00  
print.sign@blomsma.nl



**BLOMSMA**  
**PRINT&SIGN**

3M, Comply, DI-NOC and Sharpshooter are trademarks of 3M Company.  
All other trademarks are property of their respective owners.  
Please recycle. Printed in USA. © 3M 2020. All rights reserved.

75-5100-2795-8  
JR-9710-6665-9  
DIN-401-A